

Using survey data for monitoring gender-based violence~Kenya

Caroline Gatwiri Mutwiri
Gender Statistician~KNBS

16.5.2022

Outline

1

Background

2

Methodology

3

Key Indicators

4

Challenges

Background

- Government of Kenya made a valiant decision to end Gender-Based Violence (GBV) including sexual violence by 2026 and FGM/C by 2022
- Never conducted a stand alone survey on GBV; GBV and FGM/C modules in KDHSs
- VACS-Violence Against Children Survey-2010 and 2019
- GBV and FGM modules not core modules in KDHSs
- Gender Based Violence Module has been incorporated
 - ✓ 2003, 2008/09 , 2014 and 2022 KDHSs~
 - ✓ *VAM- collected in 2014 and 2022 KDHSs*
- FGM/C Module incorporated ~1998, 2003, 2008/09, 2014 and 2022 KDHSs

Methodology

- **Modular** approach; **Year**, 2022; **Respondents**, Women and Men aged 15-49 and 15-54 years; **Reference period**, Lifetime (Ever) and Recent (last 12 months);
- Only one woman or man per household is selected for the GBV module
- Sampling;
 - ✓ Sample for the 2022 KDHS -drawn from the Kenya Household Master Sample Frame (K-HMSF) based on the 2019 (KPHC)
 - ✓ A two-stage stratified sample design- the first stage 1,692 clusters ; Second stage-total of 42,300 households
 - ✓ All core modules-all households
- Subsample for the GBV Module
 - ✓ GBV module for women and the module for men were implemented in separate sub samples of households
 - ✓ Three quarters of the sample, GBV module was administered to women, and in one quarter of the sample the module was administered to men
 - ✓ FGM module-half of the sampled households
- **Ethical considerations?**

Key indicators *(KDHS)*

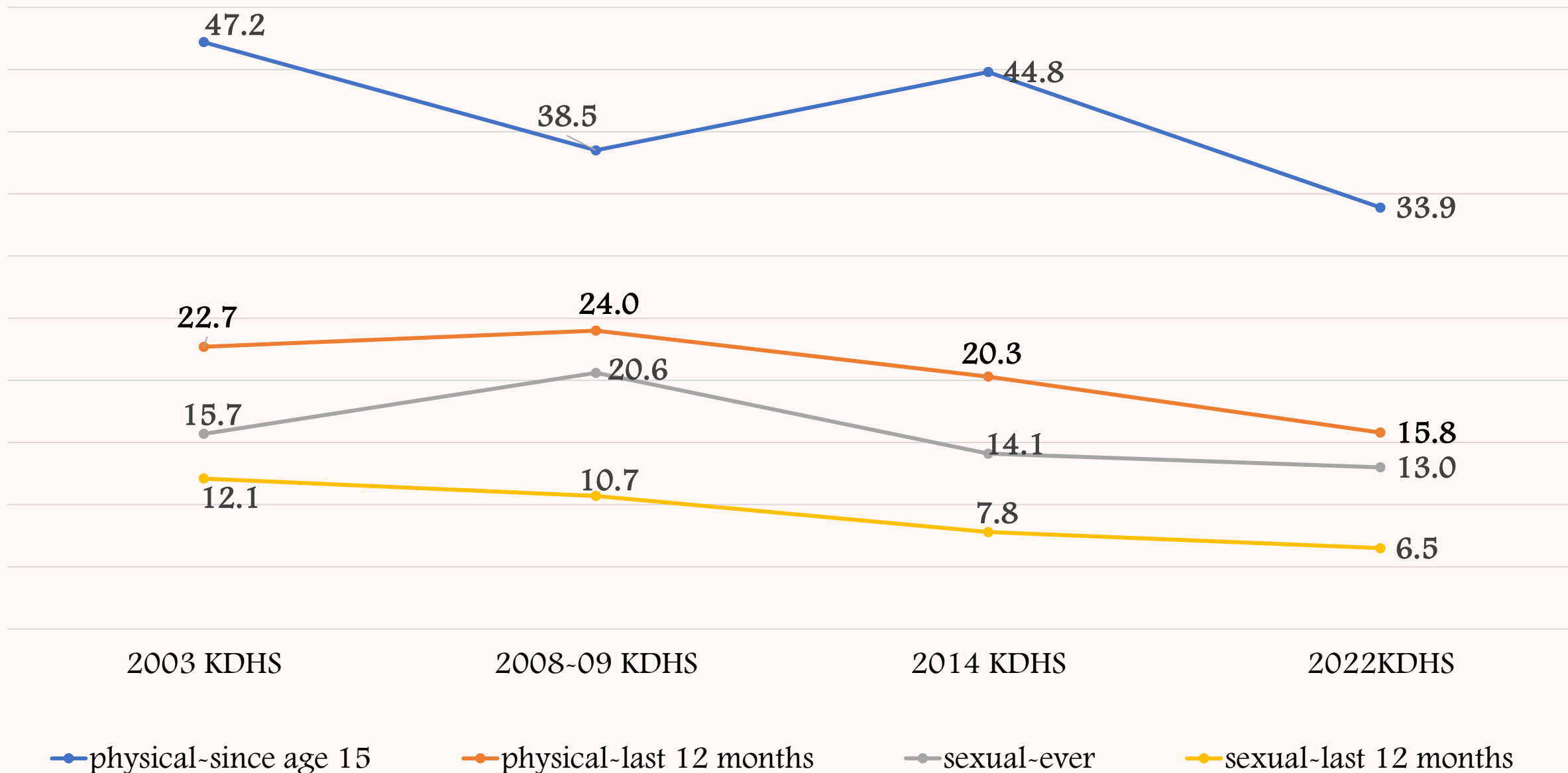
GBV

- Prevalence of violence
(physical, sexual, psychological and economic)
- Control behavior by spouse/partner
- Intimate partner violence
- Experience of physical violence for pregnant women
- Perpetrators of violence
- Help seeking behavior

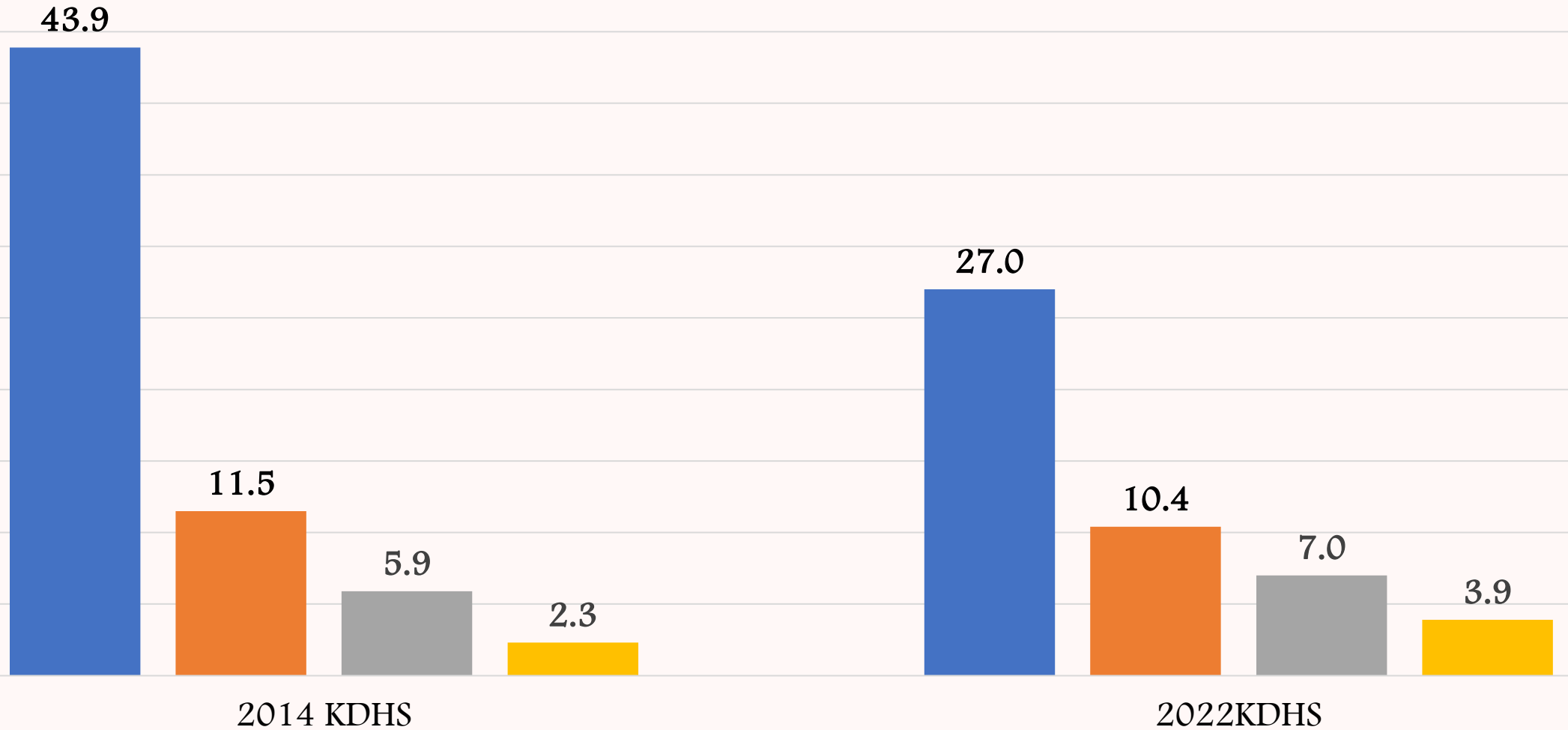
FGM

- Knowledge and prevalence of FGM
- Types of FGM/C
- Age at which FGM/C occurred
- Who performed the FGM/C
- Where the FGM/C took place
- Help seeking behaviors
- Attitude towards FGM/C

Percentage of women age 15-49 who have experienced physical and sexual violence~2003~2022

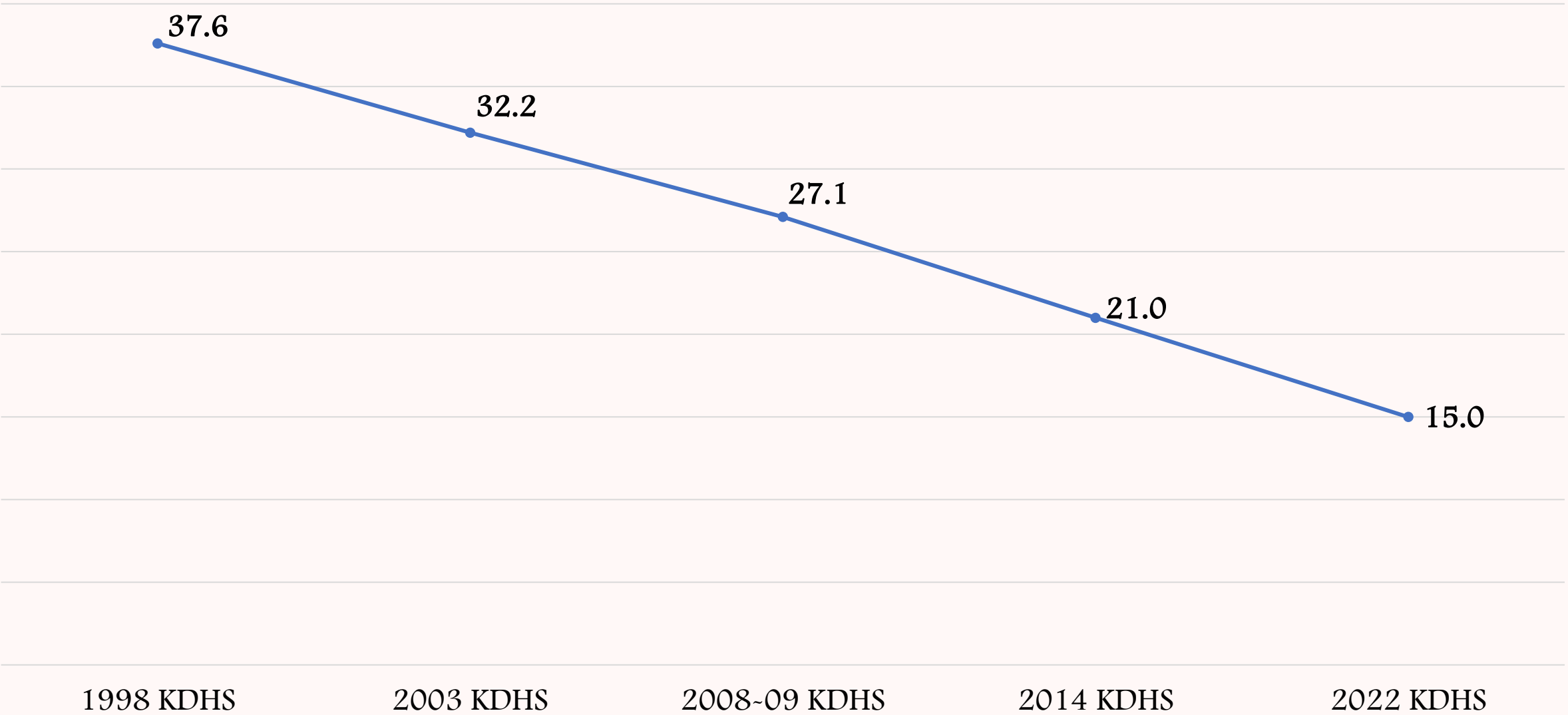


Percentage of men age 15-49 who have experienced physical and sexual violence-2014 and 2022



■ physical-since age 15 ■ physical-last 12 months ■ sexual-ever ■ sexual-last 12 months

Percentage of women age 15-49 who have been circumcised ~ ~ 1998 to 2022



Key Challenges

- Periodicity
- Not core modules in DHSs- *comprehensiveness*
- Age limitation
- Emerging issues
- Culture

Recommendations

- Resources
- Admin data
- Alternative Sources of Data

Kenya

Demographic and Health Survey
1998



Republic of Kenya



National Council for Population and Development

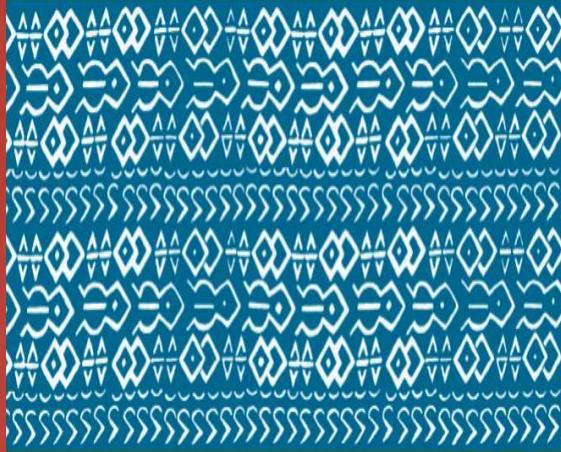
Central Bureau of Statistics
Office of the Vice President and Ministry of Planning and National Development



Demographic and Health Surveys
Macro International, Inc.

Kenya 2003

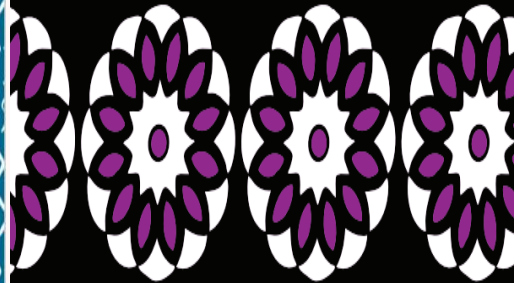
Kenya



Demographic and Health Survey

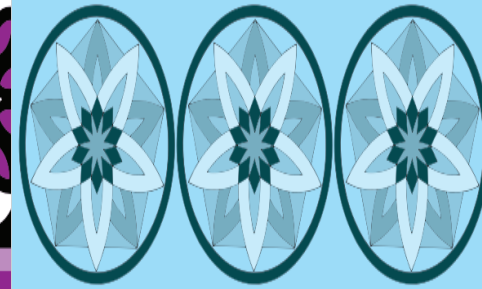
Demographic and Health Survey
2003

Kenya



Demographic and Health Survey
2008-09

Kenya



Demographic and Health Survey
2014



Kenya



Demographic and Health Survey
2022

Key Indicators Report

ASANTE SANA