

Good Practices in using data on gender- based violence for Policymaking

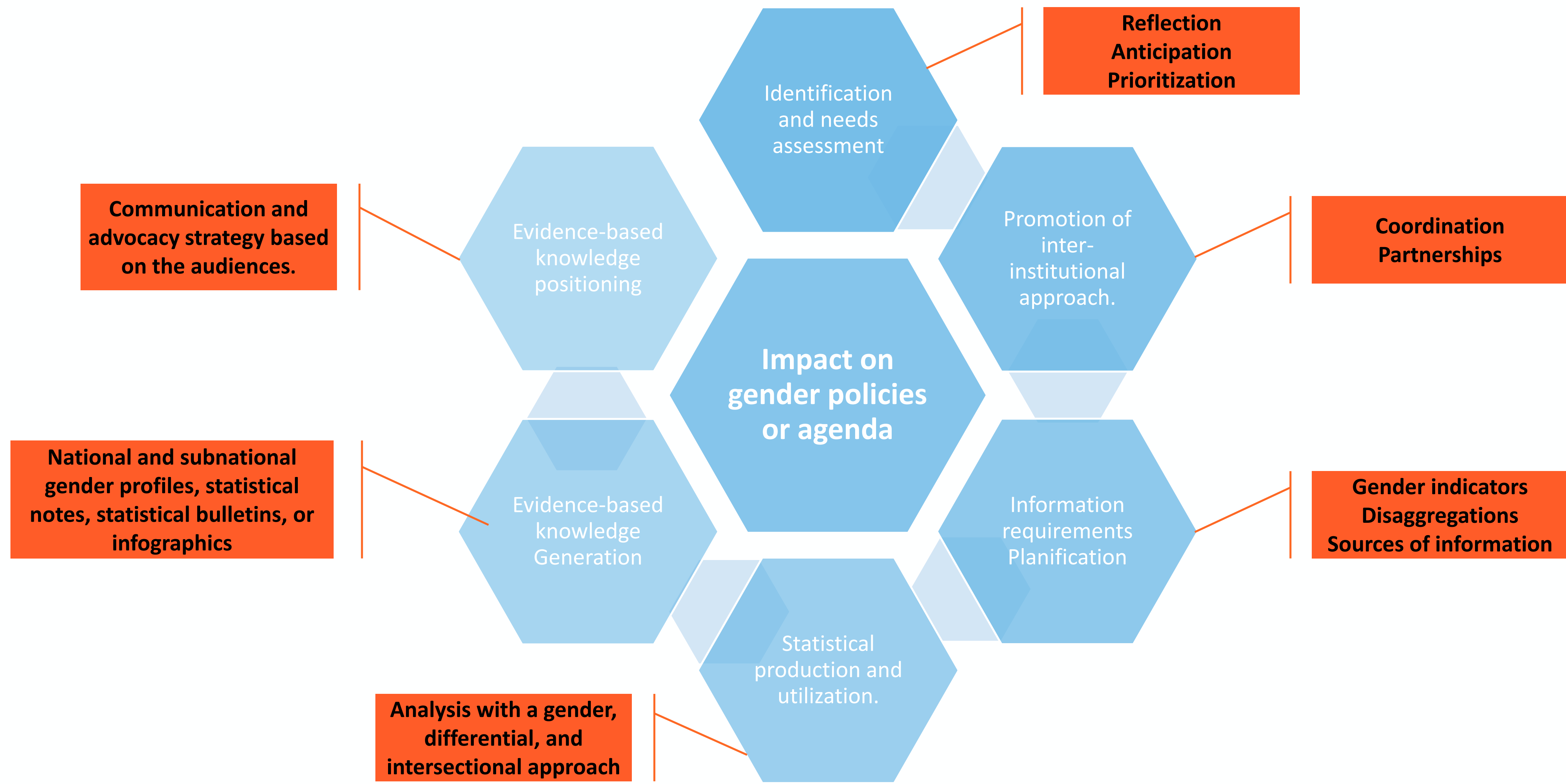
Experiences from Rwanda

Kanobana M. Dominique
Technical Adviser for Gender Statistics
UN Women/NISR

1

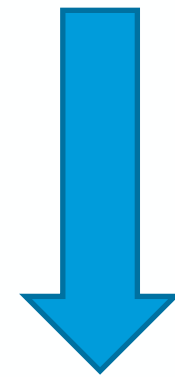
What aspects have been key for the documentation and use of data?

Promoting the use of data is a process



GBV Data Sources in Rwanda

1. Administrative Data Records from the Isange One Stop Centers



Collected through the GBV Management Information System (GBV MIS) developed by the Rwanda Investigation Bureau

2. Household Surveys



Through the Demographic and Health Survey (DHS) module on domestic violence collected since year 2005 by the National Institute of Statistics of Rwanda (NISR)

2

What examples of data utilization can be shared from Rwanda (Year: 2021-2022)?

Our experience related to Policy instruments

Revised National Gender Policy

REPUBLIC OF RWANDA

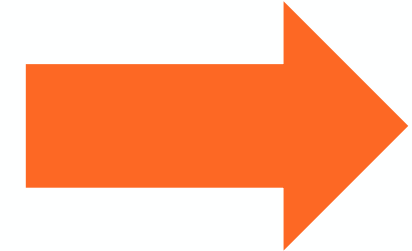


MINISTRY OF GENDER AND FAMILY PROMOTION

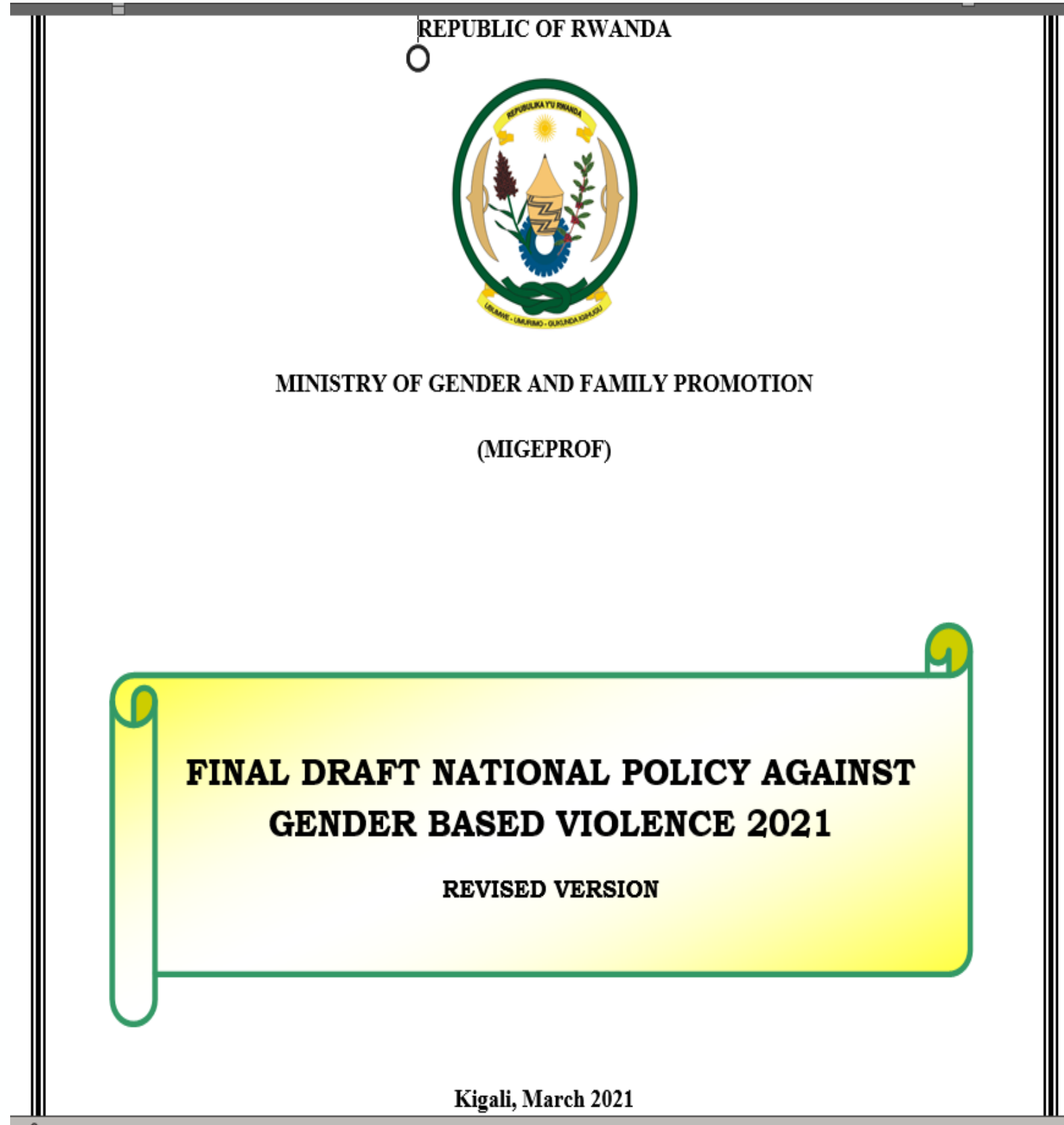
Revised National Gender Policy

Accelerating the Effectiveness of Gender Mainstreaming and Accountability for National Transformation

February, 2021

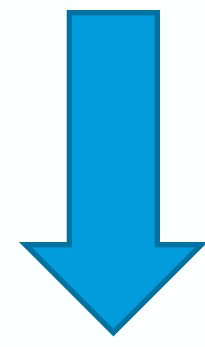


National Policy Against Gender Based Violence



Review of GBV policy serves as a window of opportunity to accommodate a number of changes and evolution that have taken place over the last decade

- ✓ Launched with key entities including GoR, DPs, CSOs, etc..
- ✓ Ad hoc presentations in different gender equality fora, etc..

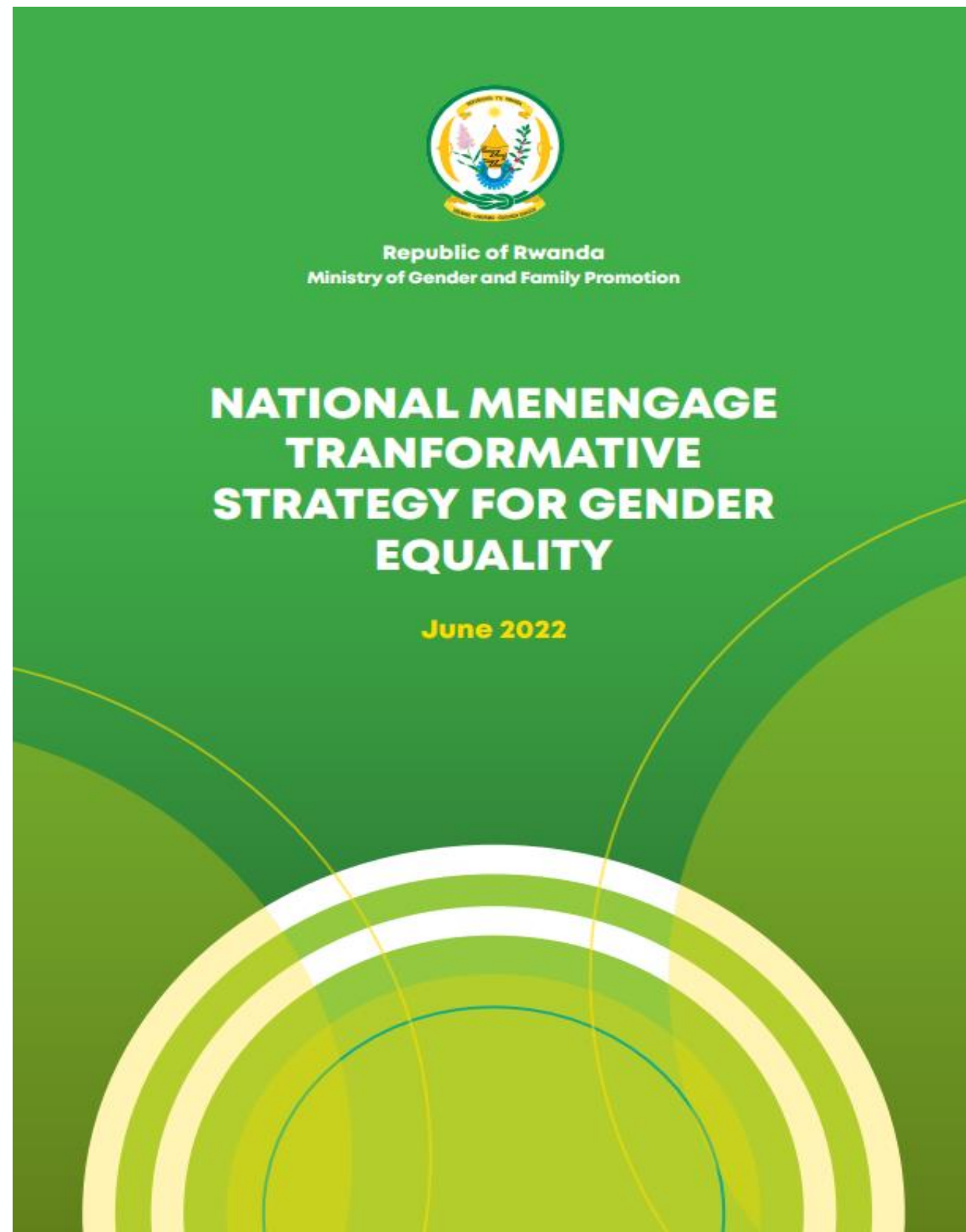


Transformative Actions in the Implementation of the National Strategy for Transformation (Gender Equality aspects)

Evidence about women and gender gaps in different dimensions of analysis, including policy recommendations.

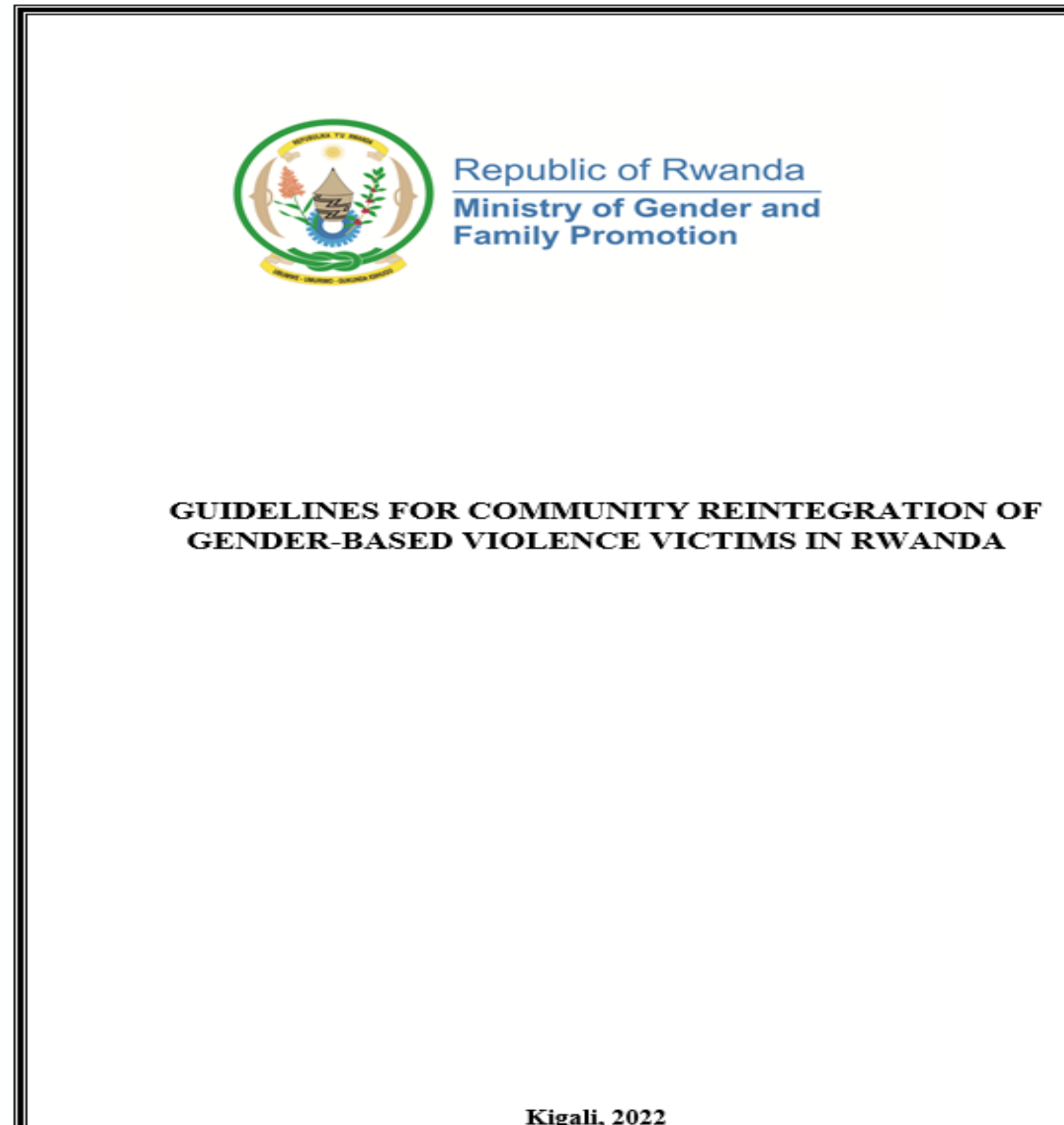
Our experience related to Strategies and Guidelines

National MenEngage Strategy



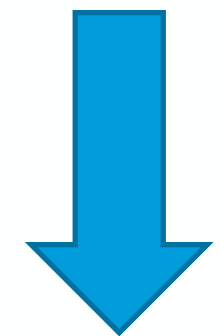
Build men and boys' meaningful engagement in achieving gender equality and promoting women's empowerment

Guidelines for Community Reintegration of GBV Victims



Provide comprehensive approaches to anti-GBV actors to harmonize community reintegration services for GBV victims.

- ✓ Launched with key entities including GoR, DPs, CSOs, etc..
- ✓ Ad hoc presentations in different gender equality fora, etc..



Transformative Actions in the Implementation of the National Strategy for Transformation (Gender Equality aspects)

THANK YOU!