



World Food
Programme

SAVING
LIVES
CHANGING
LIVES

WFP experience in Lebanon – Measuring Food Security at Household level

October 2019

Outline

Vulnerability Assessment of Syrians Refugees in Lebanon (VASyR)

- VASyR background
- VASyR objectives
- VASyR methodology
- Food Security in the VASyR
- Geographic information systems (GIS) in food security monitoring and analysis

VASyR background

- In 2013 the WFP LBCO led and conducted the first profiling exercise of the Syrians refugeeed in Lebanon
- Joint assessment with UNHCR & UNICEF
- The VASyR is a multisectoral assessment:
 - Food Security
 - Economic Vulnerability
 - WASH
 - Shelter
 - Health
 - Protection
 - Education
 - Livelihood

VASyR background

- The VASyR is a tool for planning, decision-making and needs-based programme design.
- The VASyR is conducted on a yearly basis at the same time to ensure comparability.
- In 2019 the VASyR was conducted for the seventh time.
- Since 2015 the VASyR sampling is representative on a national, governorate and district level.

Objectives & Methodology



VASyR Objectives

- To provide a multisectoral overview/update of the vulnerability situation of Syrian refugees in Lebanon through an annual household survey.
- The assessment offers an understanding of the economic situation, food security, shelter, coping strategies, access to service and more.
- To enhance targeting for the provision of assistance
- To contribute to the LCRP Situation Analysis and Monitoring and Evaluation (M&E)

Methodology

The VASyR sampling design and parameters have been consistent since the inception to preserve comparability across years

Sample design:

- Two stage cluster scheme (30 cluster by geographical area and seven households per cluster.
- 26 districts in Lebanon, where Beirut and Akkar each represent a district and a government
- 165 cases per district leading to 4,950 cases.

Parameters used:

- 50% estimated prevalence
- 10% precision
- 1.5 design effect
- 5 % margin of error

Food Security in the VASyR



Households definition in the VASyR

A household is defined as a group of people who:

- Routinely eat out of the same pot,
- Live in the same shelter (or physical location),
- Share the same budget,
- Managed by the same head of household.

Food Security classification – Methodology

The Food security classification is based on the combination of three main indicators:

- The food consumption score
- The livelihood coping strategies
- The expenditures share

	1 Food Security	2 Marginally Food Insecurity	3 Moderate Food Insecurity	4 Severe Food Insecurity
Food consumption	Acceptable	Acceptable with food-related coping strategies	Borderline	Poor
Food expenditure share	<50%	50-65%	65-75%	>75%
Coping strategies	Household not adopting coping strategies	Stress coping strategies	Crisis coping strategies	Emergency coping strategies

Food Security classification – Dimensions

- **The food consumption score** measures current food consumption. Households are grouped based on the variety and frequency of foods consumed. The FCS is grouped into three categories: acceptable, borderline and poor.
- **Share of food expenditures** measures the economic vulnerability. Households are categorized based on the share of total expenditures directed to food. Households which allocate more of their expenditures on food are more likely to be food insecure.
- **The livelihood coping strategies** measures sustainability of livelihoods. Households are categorized based on severity of livelihood coping strategies. Households which didn't apply any coping strategies fall under the category of food security.

Geographic information systems (GIS) in food security monitoring and analysis

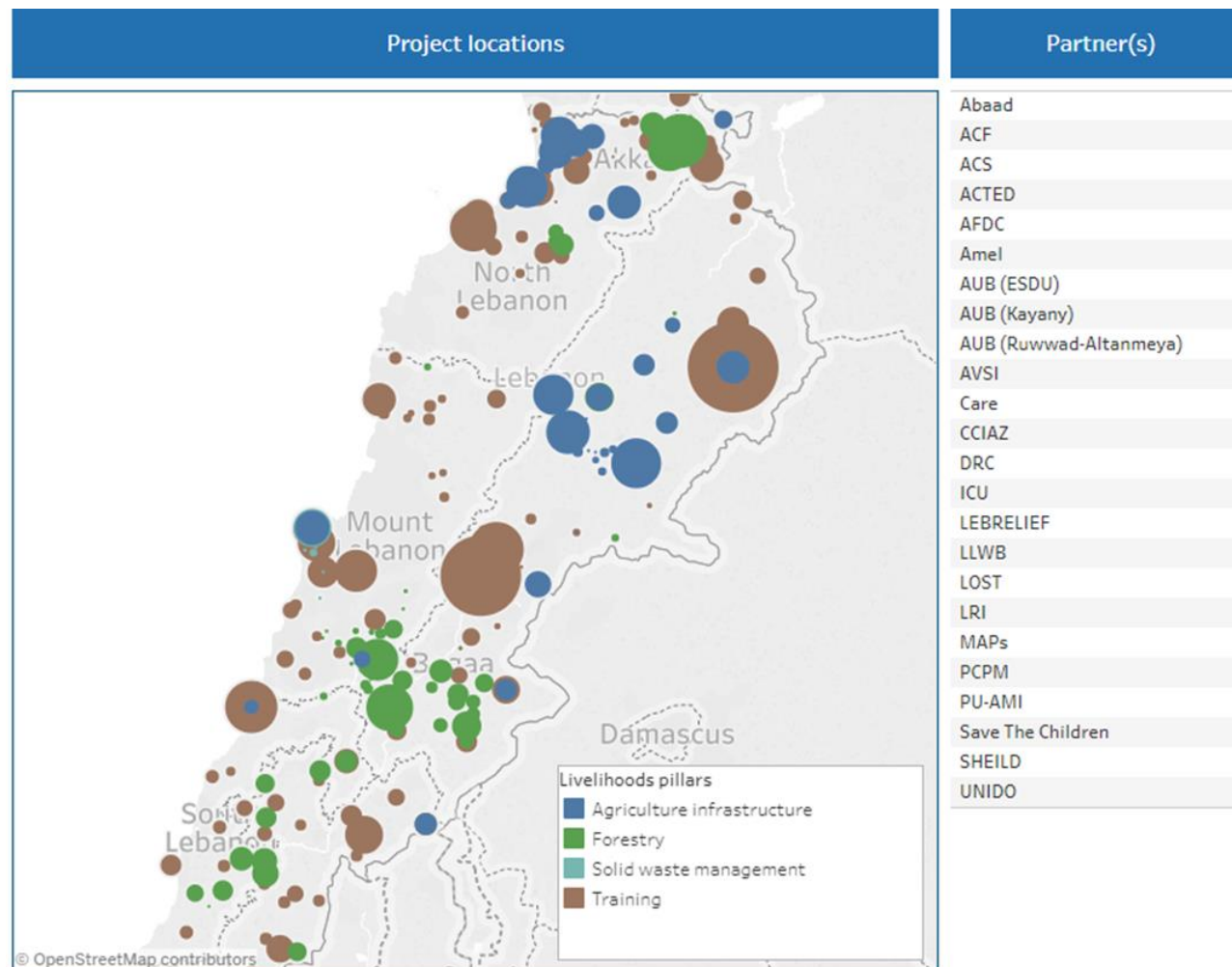


GIS in food security monitoring and analysis:

- Within the Lebanese context, one of which the vulnerable populations spread throughout the host communities, the most important question to achieve food security is usually **what is getting where and delivered by whom.**
- **GIS can assist** in answering those questions.
- **Visualization of data** allows decision makers **to see information in a new way.**

Livelihoods activities dashboard

- Monitor achievements and provide an updated overview of livelihood activities on a monthly basis. This platform is accessible to WFP staff, partners and donors.

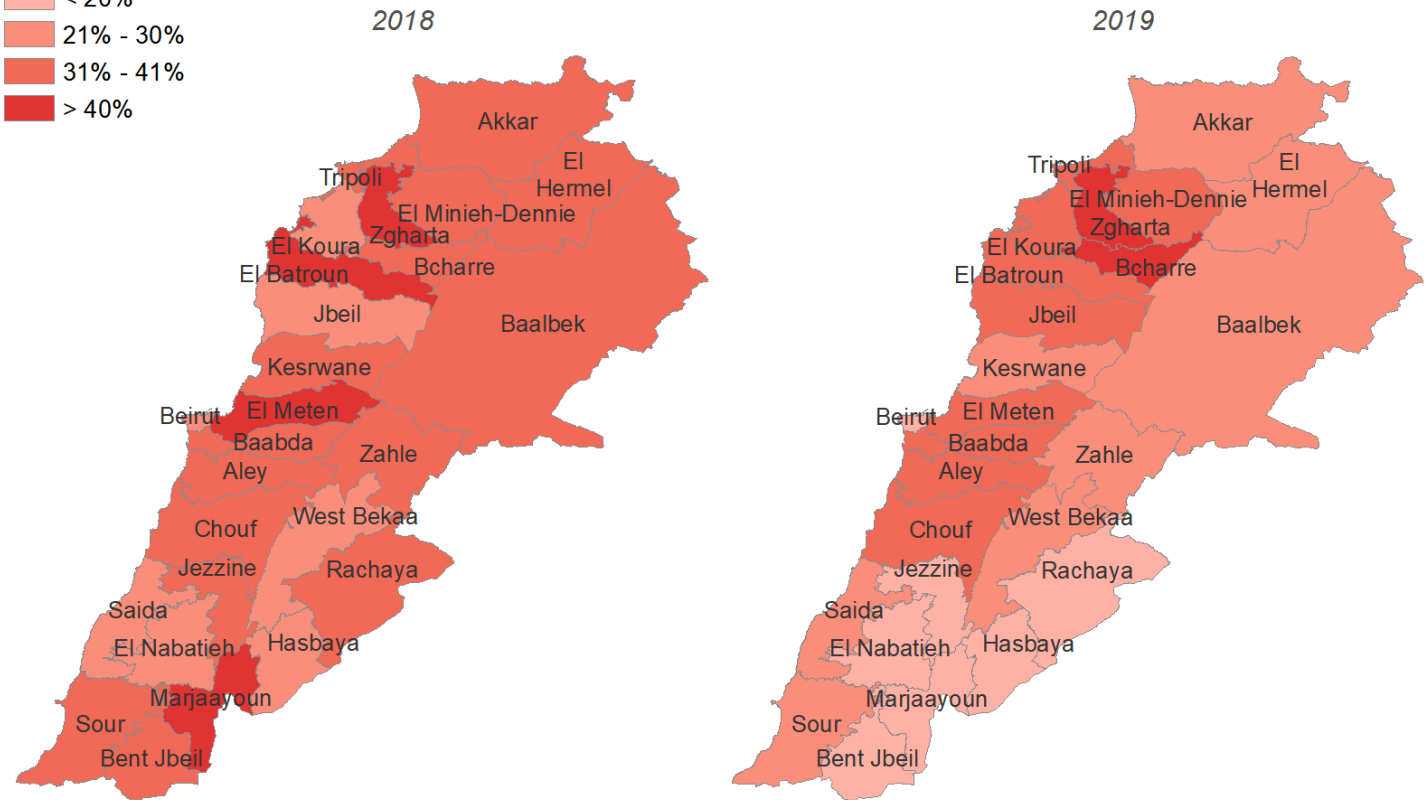
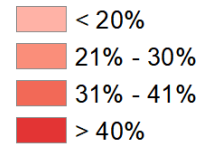


- https://analytics.wfp.org/views/Livelihoodsprojects2018-2019/Livelihoodsparticipants2018-2019?iframeSizedToWindow=true&embed=y&showAppBanner=false&display_count=no&showVizHome=no#1

Food Insecurity map

- Showing the changes and comparing information in an area over time.

Percentage of households with moderate and severe food insecurity

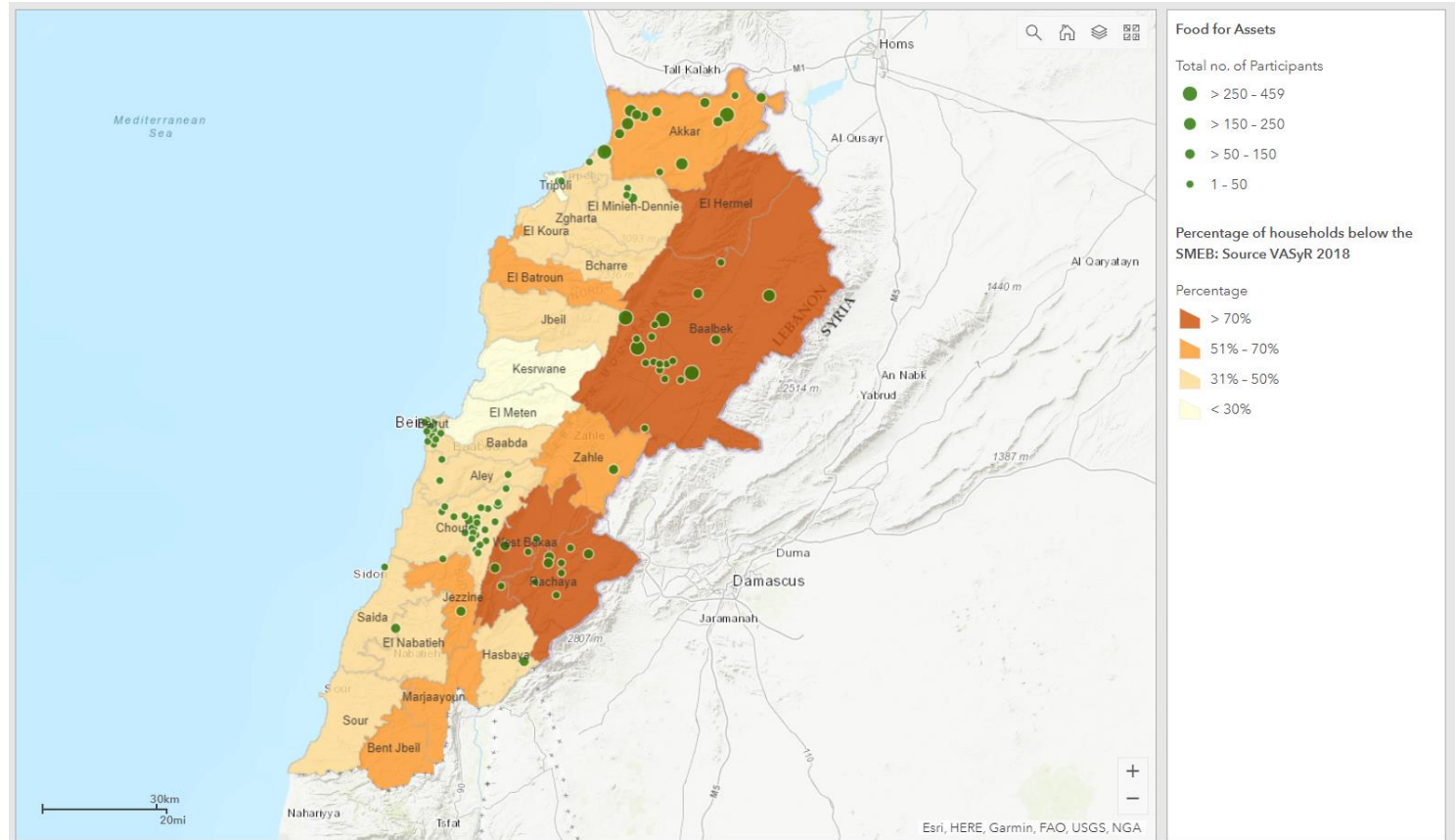


Data sources: VASyR 2019, UNGIWG, GeoNames, GAUL
© World Food Programme 2019

The designation employed and the presentation of material in the map(s) do not imply the expression of any opinion on the part of WFP concerning the legal or constitutional status of any country, territory, city or sea, or concerning the delimitation of its frontiers or boundaries.

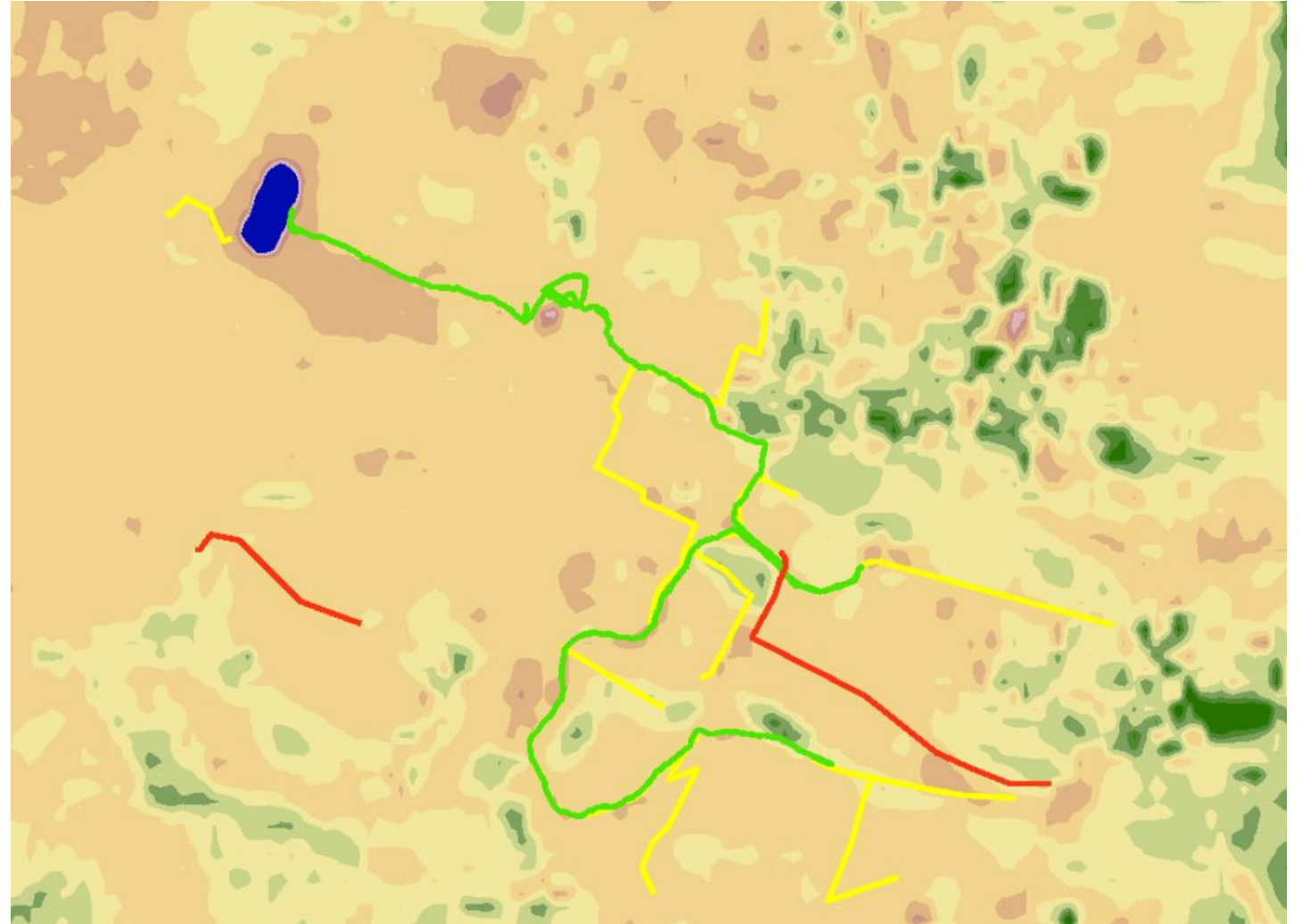
Operational dashboard

- WFP's Operational Dashboard presents WFP activities in Lebanon with other key information (VASyR main findings).
- This tool assists in identifying **gaps**, **trends**, and supports in better and faster evidence-based decisions



Satellite Remote Sensing in Agriculture and Food Security Assessment

- Enables to “go back in time” for a baseline in order to compare situation pre-and post-event (conflict, drought, intervention, ...).



Reports Produced and Useful Links

- Price and Macroeconomic Data Visualisation:
http://dataviz.vam.wfp.org/economic_explorer/prices?adm0=141
- VAM Shop :
http://vam.wfp.org/CountryPage_assessments.aspx?iso3=LBN
- VASYR Vault: https://lebanonfactbook.azurewebsites.net/vasyr_vault/
- VAM Resource Center: <https://resources.vam.wfp.org/>



Thanks!

**Questions?
Comments?**



For more information:

Lebanon.MEVAM@wfp.org