



UNITED NATIONS

الشرق الأوسط

ESCWA

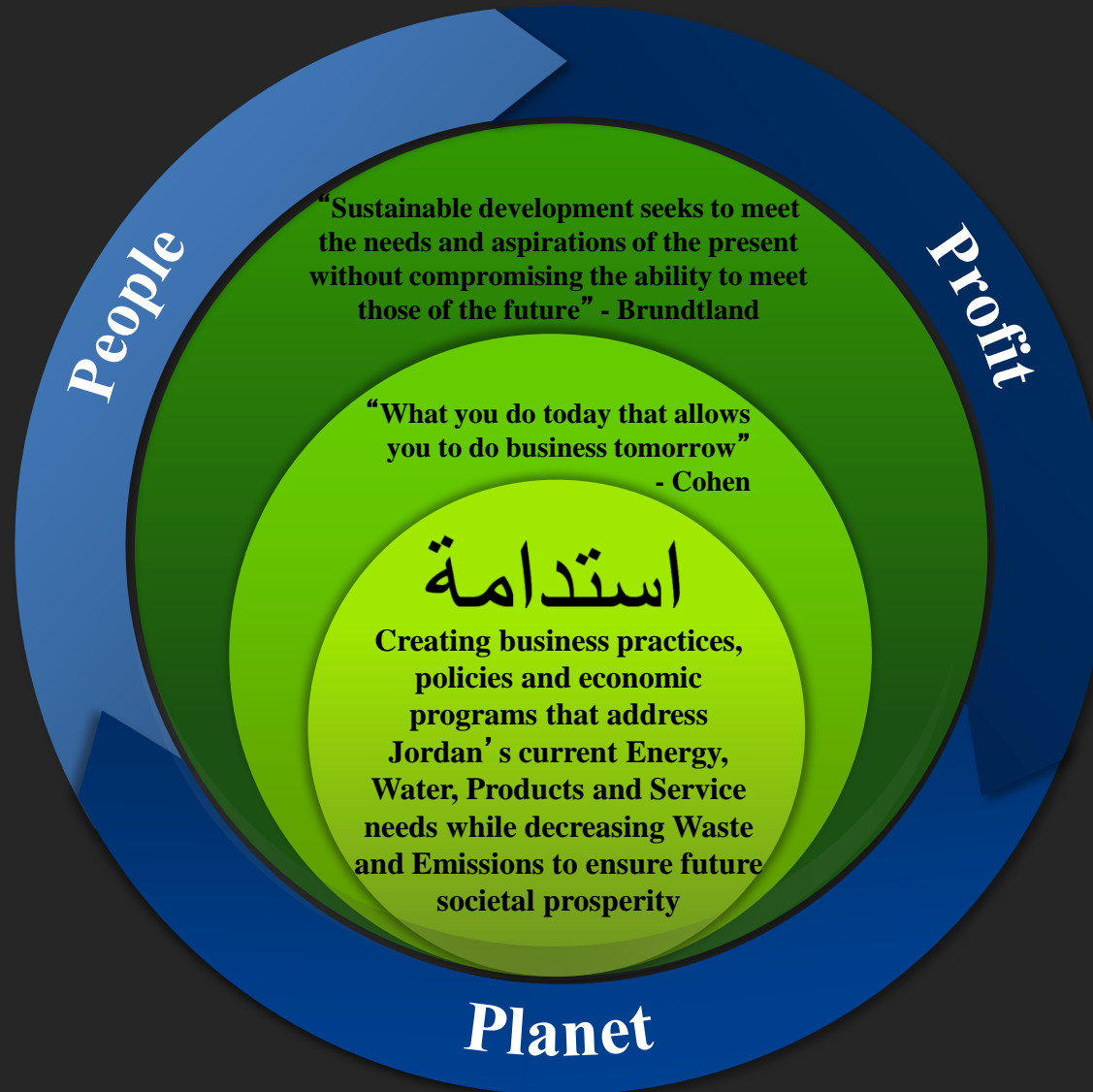
# "Integrated Approach in Sustainable Development Planning and Sustainability Excellence"

## Regional Policy Workshop on the Water-Energy Nexus

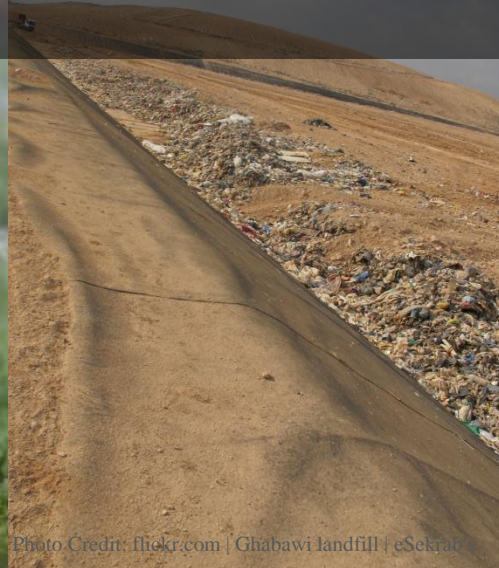
Amman - Jordan

Nov.30-31 2016

# Project | Defining Sustainability



# Key Insights | National Level



- 1/5 of Jordan's GDP is attributed to import **energy**
- 69% of the available **water** is used for irrigation and municipal needs
- 15% of energy consumption is used for water pumping
- 1.5 million metric tons of municipal solid **waste** is produced per year
- 14.4% of the **people** live below the poverty line
- Unemployment Rate is around 12%



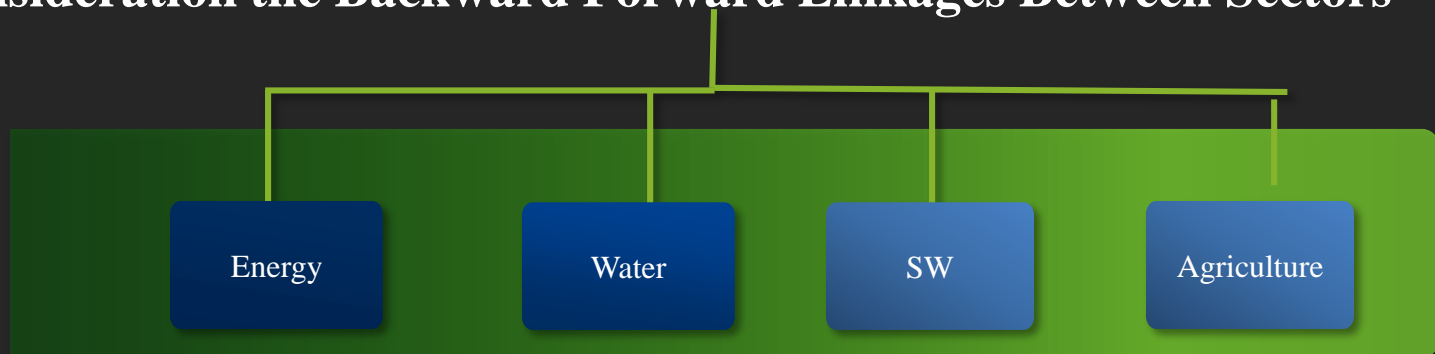


# Multiple Independent Strategies for Sustainability Related Sectors

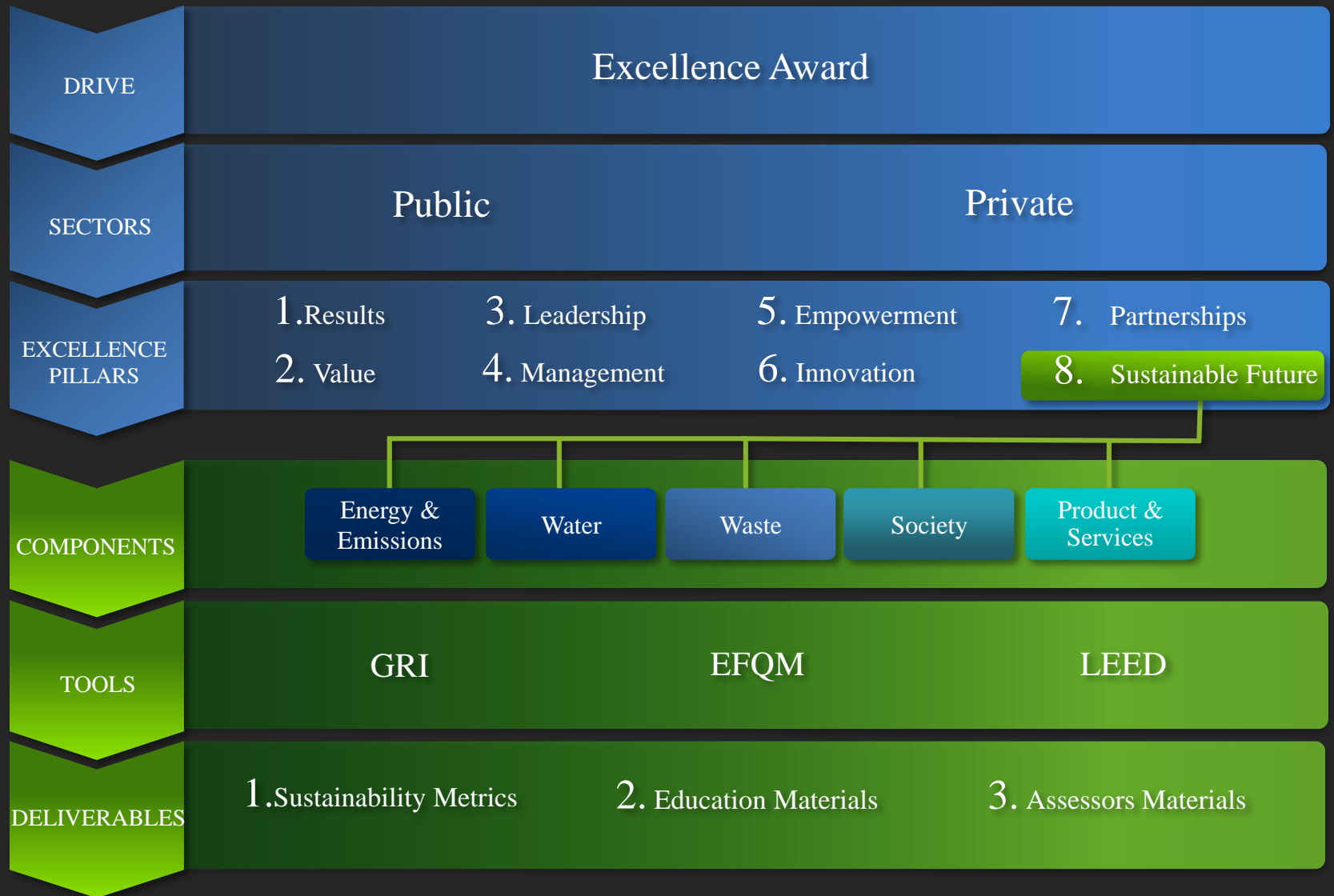
# What's needed | National SD Strategy



**We Need to an Integrated Approach of SD Planning Taking into Consideration the Backward Forward Linkages Between Sectors**

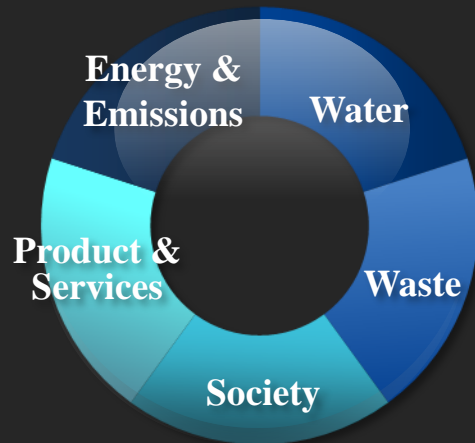


# What's needed | Sustainability Excellence

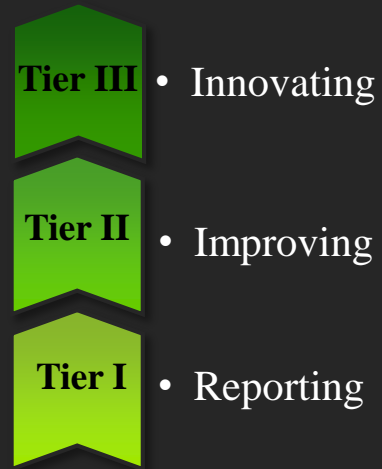


# The Metrics | New Award Elements

## 1. Components



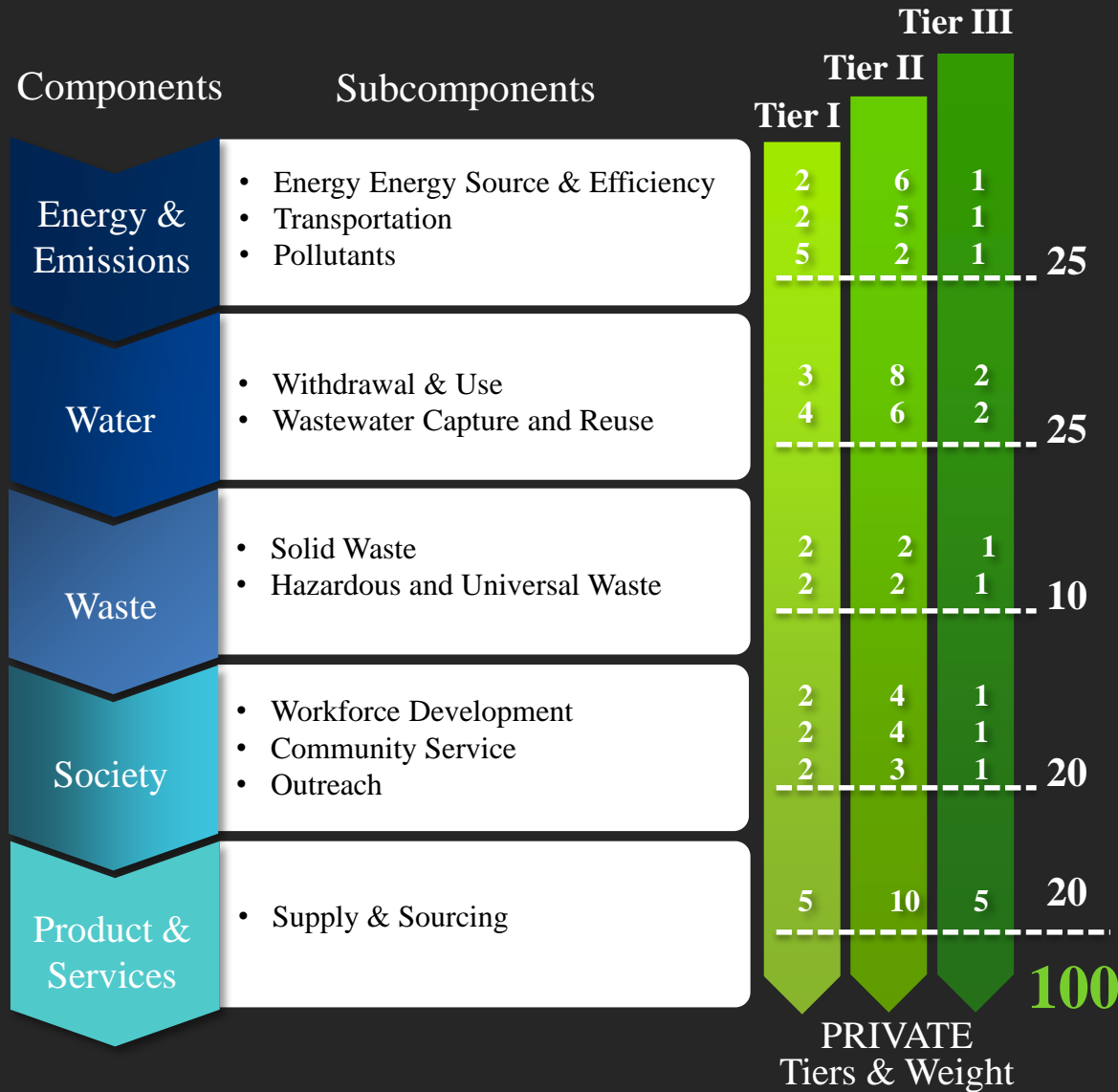
## 2. Tiers



## 3. Stars



# Metrics Scorecard | PRIVATE Indicators and Weights



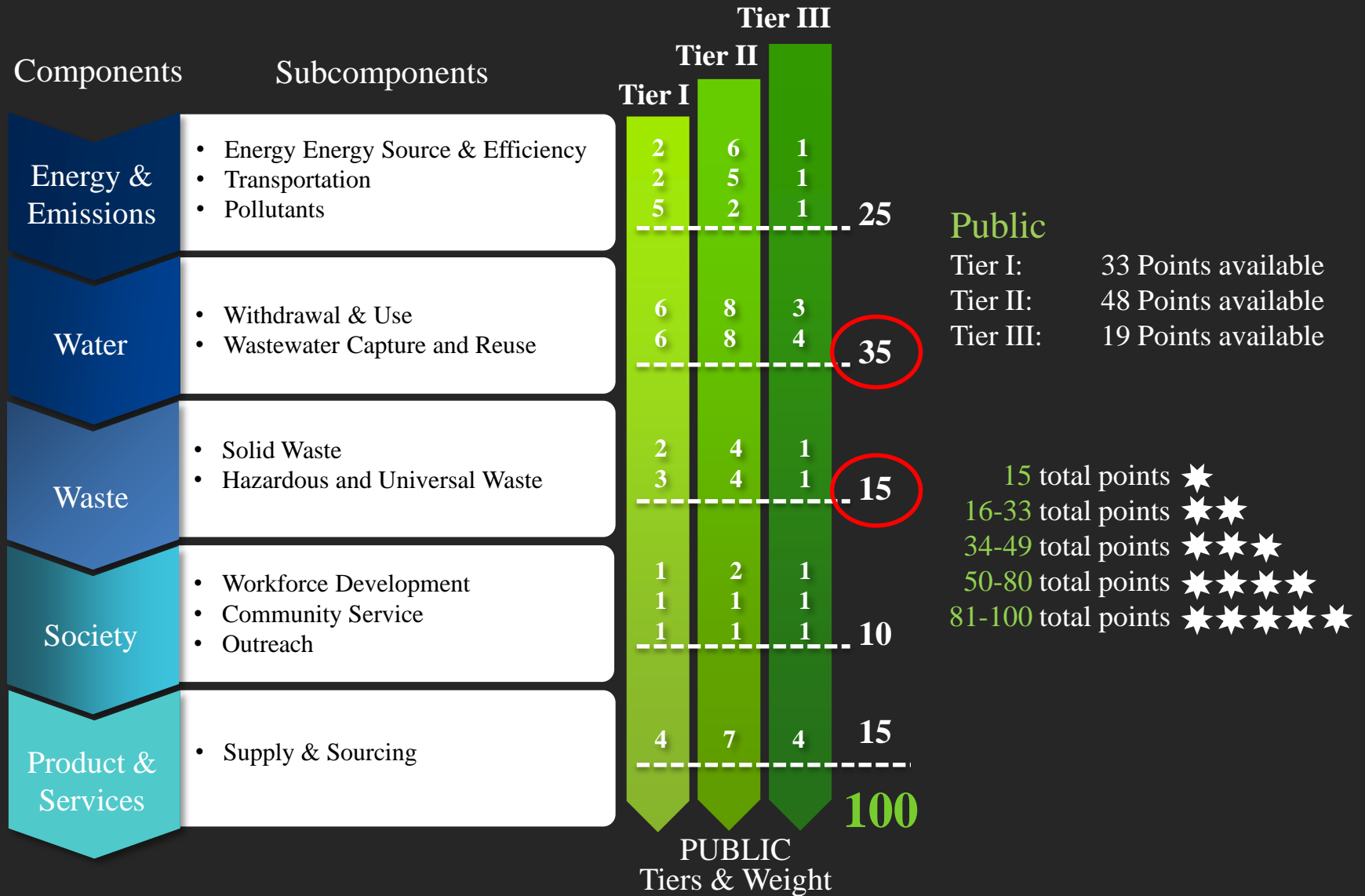
## Private

Tier I: 31 Points available  
 Tier II: 52 Points available  
 Tier III: 17 Points available

15 total points ★  
 16-31 total points ★★  
 32-50 total points ★★★  
 51-82 total points ★★★★  
 83-100 total points ★★★★★



# Metrics Scorecard | PUBLIC Indicators and Weights



# Thanks