

()

:

Distr.
GENERAL

E/ESCWA/SDD/2011/2
1 November 2011
ORIGINAL: ARABIC

()

:

11-0282

24-15

2000

1		
6		-
6 :	-	
7	-	
8 :	-	
10	-	
12	-	
15		-
15	-	
18	-	
23		-
23	-	
33	-	
39		-
39	-	
41	-	
42	-	
44	-	
45	-	
47	-	
48	-	
50	-	

52	-
61	-
61	-
62	-
15(2030-1950)	-1
17(2010-1950)	-2
172010 1950	-3
18(2030-1950)	-4
26	-5
28(2006) ()	-6
		-7
29(2008-2006)	
30(2009)	-8
39	-9
		-10
40(2009-2000)	
		-11
41(2009-1995)	
		-12
42(2009-2000)	
		-13
43(2009-2000)	
		-14

49(2009)

()

19(2030-2010)	-1
	(64-15) (24-15)	-2
20	-3
24 (2009-1980)	-4
24 (2009-1980)	-5
25 (2009)	-6
		-7
27 (2009)	-8
31(2009)	-9
		-10
32 (2009)	-11
		-12
43 (2009-1990)	-13
44	.. (2010)	-14
		-15
45	-16
46	-17
47	...	-18
		-19
48 (2005)	-20
	(24-15)	-21
50 (2008)	-22



(1)

24-15

.1995

2000

(2)

⁽³⁾(2008)

16

2006

⁽⁴⁾2006 /

.René Lenoir, 1974, *Les Exclus, un Français sur dix*, Paris, Le Seuil (1)

() (2)

.2006 /

http://www.imagenations.org/partnerships/gpyi_arabic.aspx (3)

<http://www.shababinclusion.org/section/arabic/facts> (4)

(5)

30-18

(6) 2007

2007

2008

(7)

<http://www.silatech.com/Arabic> (5)

http://youth-partnership-eu.coe.int/youth-partnership/news/attachments/World_Youth_Report_2007.pdf (6)

(7)

http://siteresources.worldbank.org/INTMENA/Resources/Shaping_Future_Overview-ARB.pdf .2009

()

2000

2000

31 29

: 2009 /

1974⁽⁸⁾



(9)

: -

-1

() :

()

()

()

()

()

-2

_____ -3

) ⋮ ()
(()

_____ -4

(()
()
()

-



(10)

(11)

(12)

Mongi Bédoui, 1995, *Bibliographie sur l'exclusion sociale dans les pays du Maghreb et du Machreq (Afrique du Nord et Moyen-Orient)*, IIES Série Documents de travail, no. 80. Genève, Institut international d'études sociales. (10)

Centre d'études et de recherche économiques et sociales, 1992, Actes du colloque "Exclusion sociale et marginalisation dans le monde arabe", No. 109, Tunis. (11)

Fanny Colonna et Zakya Daoud, 1993, *Etre marginal au Maghreb*, Paris, éditions CNRS (12)

(13)

(15)

(14)

(16)

Jad Chaaban, 2008, *The Costs of Youth Exclusion in the Middle East*, Middle East Youth Initiative, Working Paper (13)
No. 7. <http://www.shababinclusion.org/content/document/detail/983>.

.2007 / : (14)

<http://www.shababinclusion.org/content/document/detail/537>

.2007 / : (15)

.United Nations, 2007, *Literature Review on Social Exclusion in the ESCWA Region*, New York (16)

∴

()

()

()

()

()

()

()

()

(2.6)
1990 1970

-1980 3.03 (3)
.2000-1990 2.42 1990

-1
(2030-1950)

	()	
	51	1950
2.58	66	1960
2.41	84	1970
3.23	116	1980
3.03	157	1990
2.42	200	2000

.United Nations, *World Population prospects: the 2010 Revision*, New York, 2011 : _____

2010 1950

2030

370

250

(17)

2010 1950

17

5

(2)

7.80

3.60

.1995-1950

(2010-1950)

-2005 2010	-2000 2005	-1995 2000	-1990 1995	-1985 1990	-1980 1985	-1975 1980	-1970 1975	-1965 1970	-1960 1965	-1955 1960	-1950 1955	
2.94	2.03	1.94	4.98	3.95	3.97	2.78	3.65	7.79	4.64	6.43	7.38	
11.09	2.55	2.65	2.52	3.35	3.05	6	4.49	2.57	2.82	3.88	2.85	
1.98	2.9	2.41	2.79	3.06	3.44	3.32	3.4	3.38	3.27	3.14	2.69	
2.51	2.33	2.52	2.58	2.36	3.19	3.17	2.97	2.52	2.38	2.36	2.23	
2.93	2.74	3.24	3.1	2.31	2.38	3.08	3.24	3.33	2.79	2.35	2.75	
2.71	1.41	0.29	3.56	3.88	5.28	5.48	4.1	2.98	2.46	2.15	1.86	
2.55	2.12	4.17	4.42	3.36	3.06	2.66	3.24	1.15-	2.16	1.58	1.16	
15.24	6.58	3.29	1.14	5.05	10.15	6.16	8.14	7.89	8.79	5.5	7.16	
3.79	3.08	3.52	4.98-	3.62	4.7	5.35	6.72	8.84	12.15	5.94	5.05	
0.85	1.59	1.55	3.22	0.43	0.64	0.21	2.31	2.23	2.89	3.12	2.47	
1.78	1.85	1.72	1.76	2.3	2.39	2.27	2.22	2.46	2.6	2.66	2.54	
2.65	3.64	1.61	2.72	3.99	5.99	5.77	4.82	3.74	3.39	2.68	2.49	

.United Nations, *World Population prospects: The 2010 Revision*, New York, 2011 : _____

.1993

.(3)

(*)2010

1950

-3

3.1		10.9	
3.1		9.4	
2.7		4.7	
2.6		3.7	
2.5		3.6	
2		3.2	
1.5		3.1	

.United Nations, *World Population prospects: The 2010 Revision*, New York, 2011 : _____

.1950 2010 (*)

(18)

-

-1

15

24 15

(4) 3.75

2010 1950 5.32
20 2010 50

2030 2010
800 000

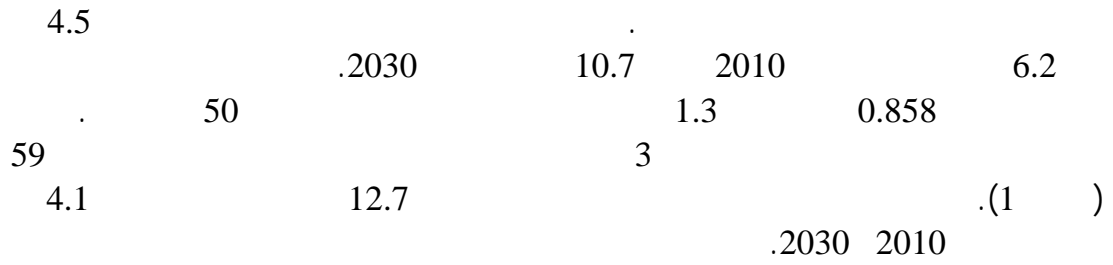
-4

(2030-1950)

	(24-15)		
		()	
	18.75	9 546	1950
1.73	17.31	11 347	1960
3.75	19.14	16 510	1970
2.97	19.13	22 227	1980
3.14	19.42	30 434	1990
2.88	20.32	40 575	2000
2.26	19.66	50 859	2010
1.3	18.16	57 928	2020
1.41	17.65	66 731	2030

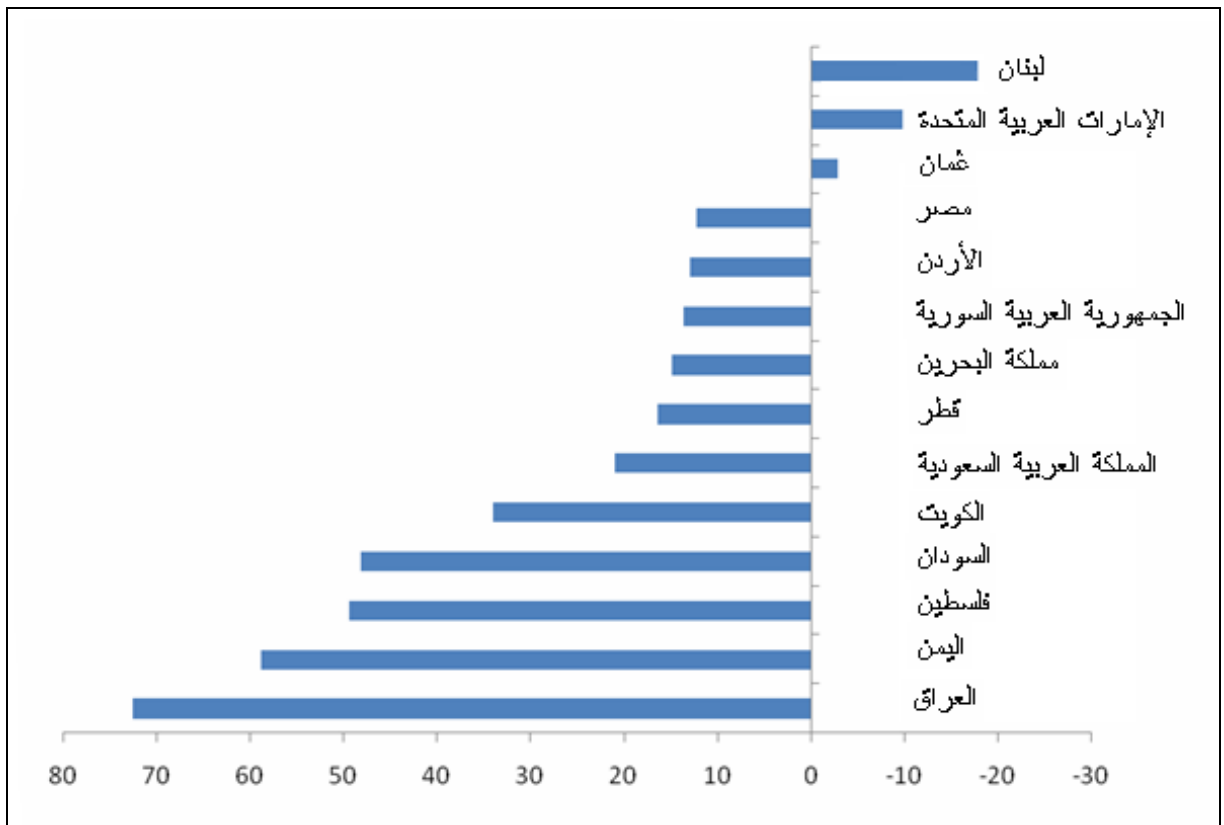
.United Nations, *World Population prospects: The 2010 Revision*, New York, 2011 : _____

(18)



-1

(2030-2010)



.United Nations, *World Population prospects: The 2010 Revision*, New York, 2011 : _____

2030

3

10

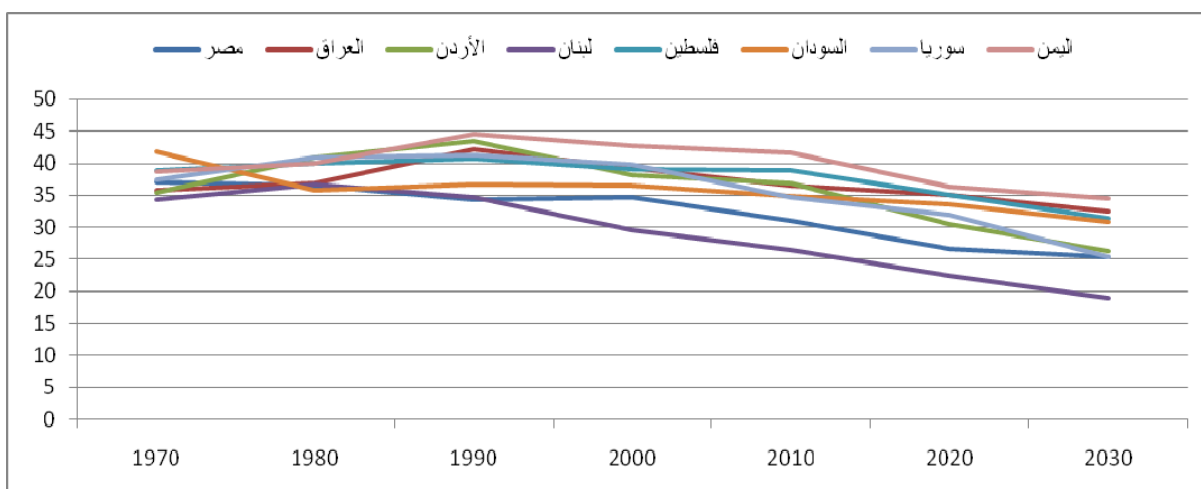
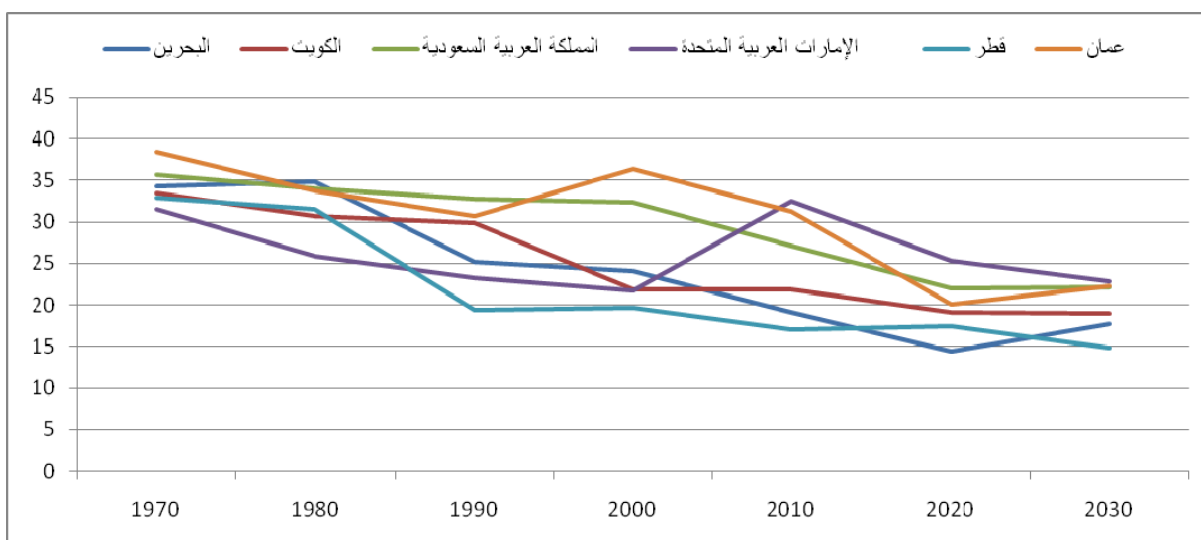
18

(2) 2030

(24-15)

-2

(64-15)



_____ -2

24-15

(19)

()

(20)

1.3

()
1990 1960
2.7

1.4

()

(21)

52

2030 1980

(22)

Andrew Mason, 2003, *Capitalizing on the Demographic Dividend*, Population and Poverty, Population and Development Strategies (8), New York. (20)

(21)

Andrew Mason, 2007, *Demographic Transition and Demographic Dividends in Developing and Developed Countries*, Proceedings of the United Nations Expert Group Meeting on Social and Economic Implications of Changing Population Age Structures, Mexico City, 31 August-2 September 2005. (22)

(23)

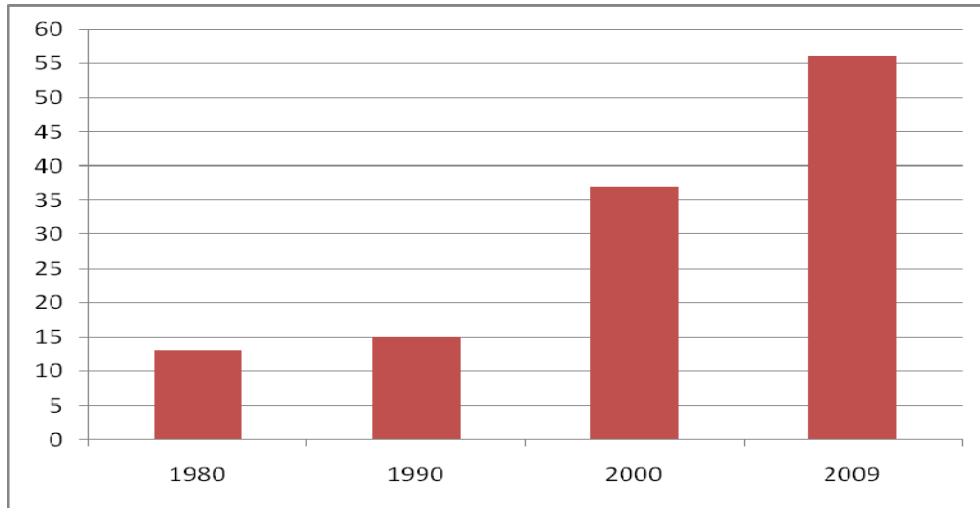
_____ -1

56

40	22
.2009-2000	.(24-5)
	3.7 2000-1990
	9

Patrick Fitzsimons, 1999, *Human Capital Theory and Education*, University of Auckland, <http://www.vusst.hr/> (23)
[ENCYCLOPAEDIA/humancapital.htm](http://www.vusst.hr/ENCYCLOPAEDIA/humancapital.htm) on 29 March 2003; Theodore Schultz, 1961, *Investment in Human Capital*, The American Economic Review.

(2009-1980) (*) (**)



1980

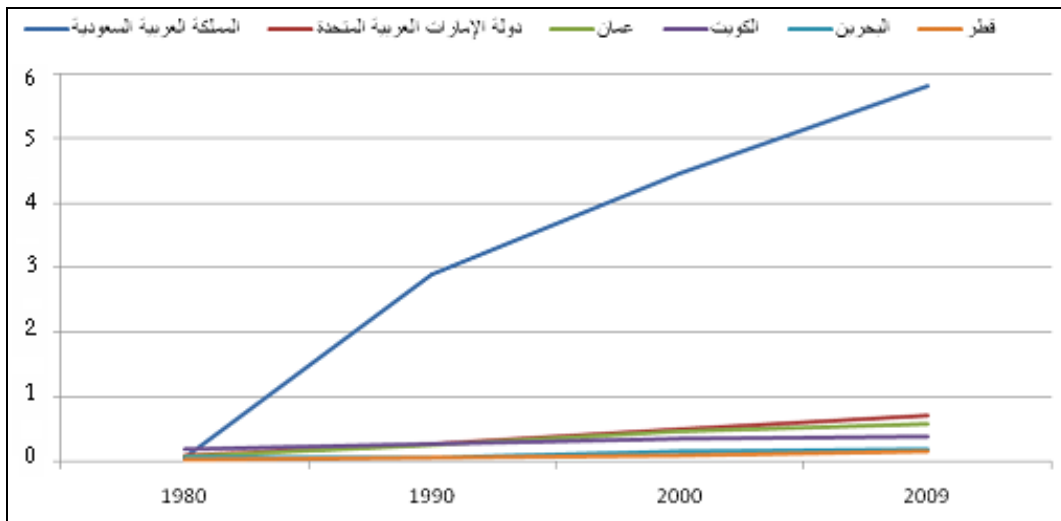
1990

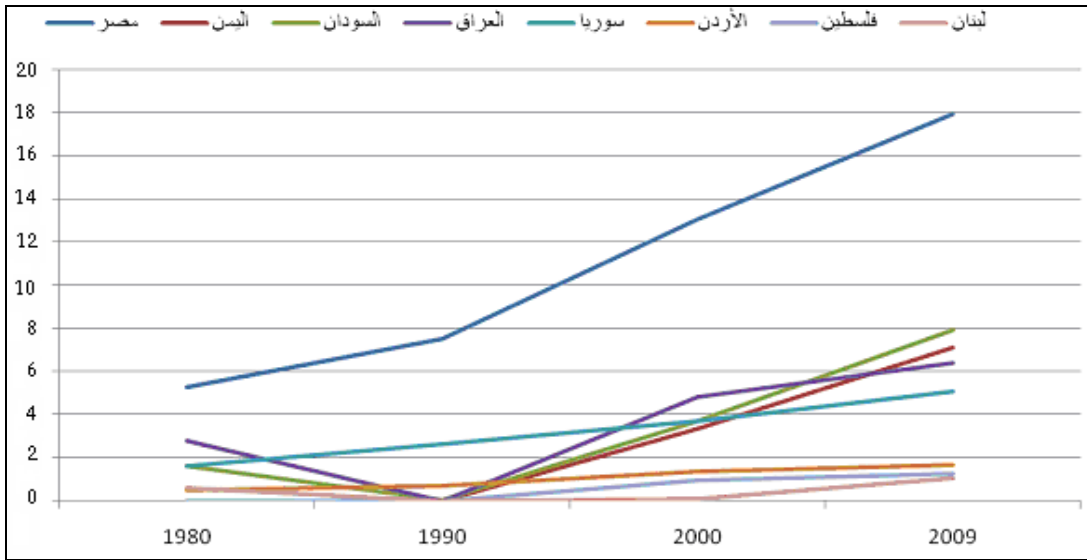
(*)

(**)

(4)

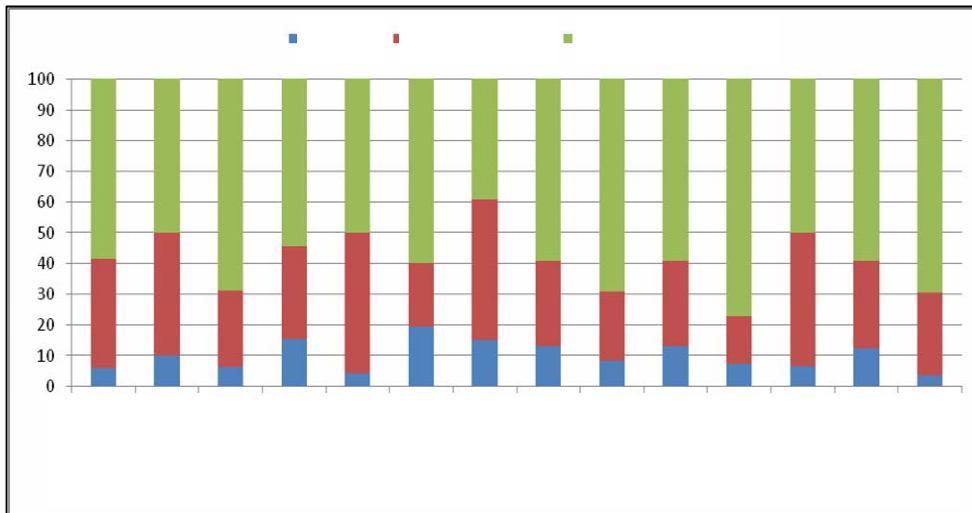
(2009-1980) (*) (**)





1980 (1980) (*)
 1990 (1990) (**)

(5)
 34 63
 (2009) -5



(5)

-5

2009	94.6	93.8	
2009	97	97.7	
2009	98.1	98.8	
2008	92.7	97.3	
2009	38	41.9	
2009	82	87.5	
2009	80.4	81.1	
2009		77.5	
2009	98.3	98.4	
2009	92.6	93.4	
2009	90.4	91.1	
2009	93.8	95.4	
2009	85.1	86.4	
2008	66	73	

.Millenium Development Goals Indicators, mdgs.un.org :

24-15

5

27
15.5

9

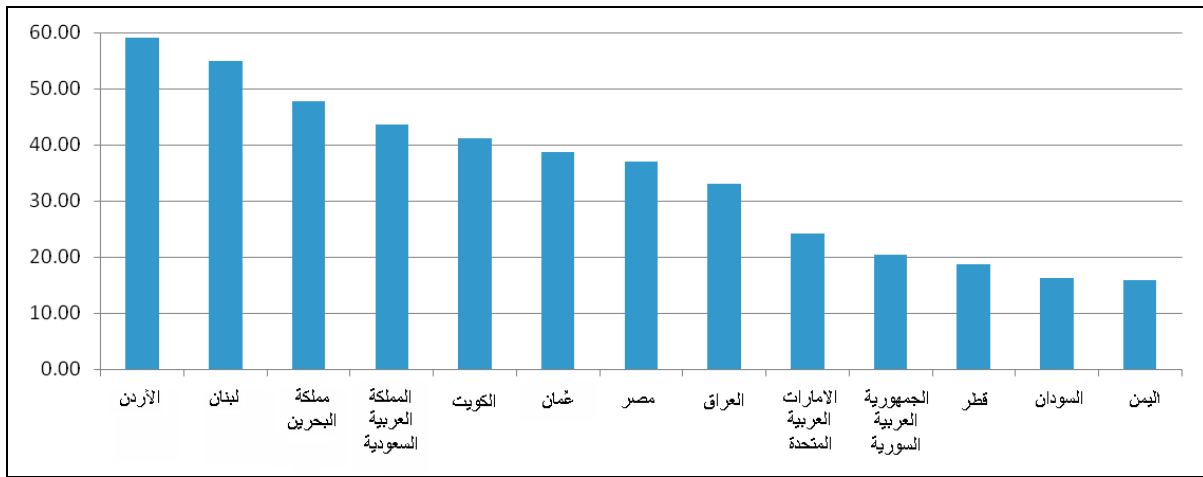
-2

(24-15)

40

-6

(2009)



.(2009)

-3

.()

5.76 2006
6.95

1 013 192
18-6

.(6)

() -6
(2006)

6.95	5.76	590 831	1 013 192	
15.04	10.5	82 497	122 974	
13.81	10.5	63 123	100 535	
10.69	7.75	53 486	81 396	
7.77	6.5	42 220	72 927	
14.92	10.99	46 223	70 729	
12.84	9.98	42 036	68 104	
8.75	7.36	27 012	47 421	6

: _____

18 6

416 023
2.37 2006

18-6

2.67

2008 2006

.(7) 64

-7

(2008-2006)

1026141	367914	658227	21842	4570	17272	302350	94025	208325	701949	269319	432630	-2006 2008
----------------	--------	--------	--------------	------	-------	---------------	-------	--------	---------------	--------	--------	---------------

100	35.85	64.15	2.13	20.92	79.077	29.5	31.10	68.90	68.41	38.37	61.63	-2006 2008
------------	-------	-------	-------------	-------	--------	-------------	-------	-------	--------------	-------	-------	---------------

.2009-2008

: _____

-4

12

6

2009

62

.(8)

(2009)

13 188	48.77	6 432	51.2	6 756	
33 514	23.98	8 035	76.0	25 479	
29	48.28	14	51.7	15	
257 276	61.85	159 125	38.2	98 151	
1 204 956	60.59	730 057	39.4	474 899	
1 057 583	55.14	583 157	44.9	474 426	
13 582	47.22	6 414	52.8	7 168	
6 493	48.85	3 172	51.1	3 321	
5 877	21.30	1 252	78.7	4 625	
5 980	42.74	2 556	57.3	3 424	
9 664	35.85	3 465	64.1	6 199	
2 597 157	59.29	1 539 819	40.7	1 057 338	
116 067	72.08	83 662	27.9	32 405	
826 908	85.85	709 885	14.2	117 023	
6 148 281	62.4	3 837 044	37.6	2 311 237	

(2008) (2008) (2005) (2007) : _____ : (2006)

.(8)

26

3

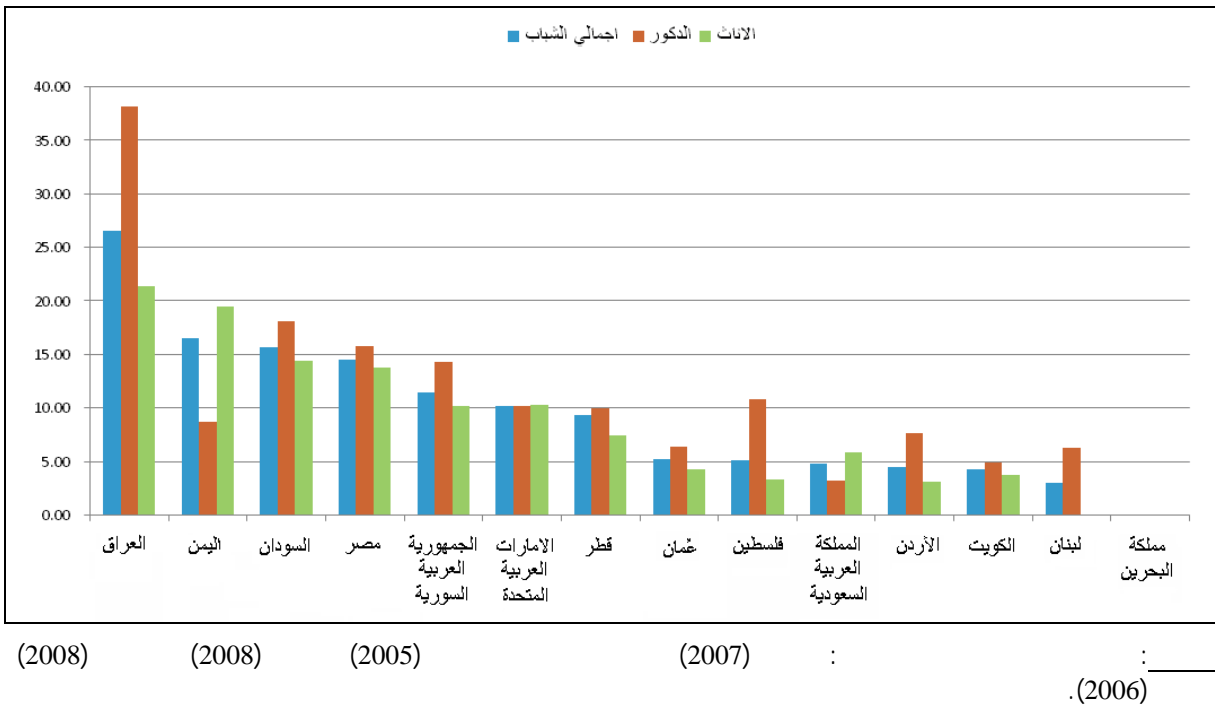
15

(7)

2015-2012

-7

(2009)



5

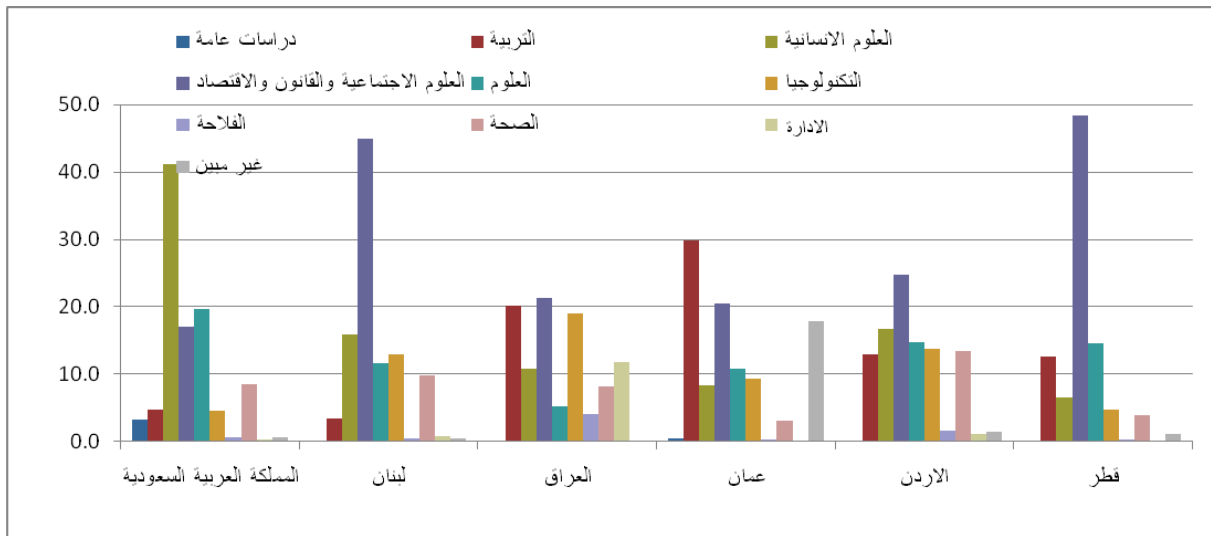
15

5

15

(8)

(2009)



.

-

.

.

.

_____ -1

34

2001

8 10

8

() :

()

()

()

() :

()

()

()

-2

_____ -3

_____ ()

_____ ()

_____ ()

"

"

_____ -4

.2008

160

4.2

2.03

51

2008 1998

37

(9)

-9

(24-15) ()			(64-25) ()			(64-15) ()			
-1998 2008	2008	1998	-1998 2008	2008	1998	-1998 2008	2008	1998	
14.4	1 208 472	1 056 542	21.5	3 782 996	3 114 375	19.7	4 991 468	4 170 917	
0.8-	128 881	129 894	10.9	754 386	680 163	9	883 267	810 056	
4.3	64 335	61 700	8.7	242 461	223 114	7.7	306 797	284 814	()
14.9	243 763	212 097	17.3	904 875	771 705	16.8	1 148 638	983 803	
8.7	109 059	100 357	29.1	314 741	243 747	23.2	423 799	344 103	
19.2	313 853	263 392	29.9	770 66	593 200	26.6	1 084 512	856 592	
6.3	104 783	98 560	27.5	314 184	246 432	21.4	418 967	344 993	
31.4	158 368	120 557	32.4	289 981	219 028	32	448 349	339 585	
23.75	68 473	55 332	44.43	157 944	109 353	34.39	221 318	164 684	
29.1	50 740	39 277	41.37	109 145	77 202	37.27	159 886	116 479	
10.45	17 733	16 054	35.91	43 699	32 151	27.43	61 432	48 205	

.2008 /

: _____

17.57

0.98

1.85

2

2.14

1.72

13.66

6.43

1.54

-10

(2009-2000)

1.19	3.72	0.87	
0.79	1.24	1.37	
1.52	0.91	1.72	
1.80	0.89	2.00	
1.33	1.61	1.20	
1.04	1.54	1.00	
1.83	2.10	1.72	
1.31	6.43	0.53	
17.06	13.66	17.57	
1.77	1.59	1.85	
0.88	0.64	0.98	
1.44	1.07	2.14	
0.59	2.37	0.36	
4.01	4.95	3.79	

()

(11) 3.6 3.0 (24)
2009-2001

-11

(2009-1995)

25	24-15	15	
3.24	4.06	3.4	2000-1995
3.4	1.57	3.05	2005-2000
2.89	1.38	2.63	2009-2005

(2009-2000)

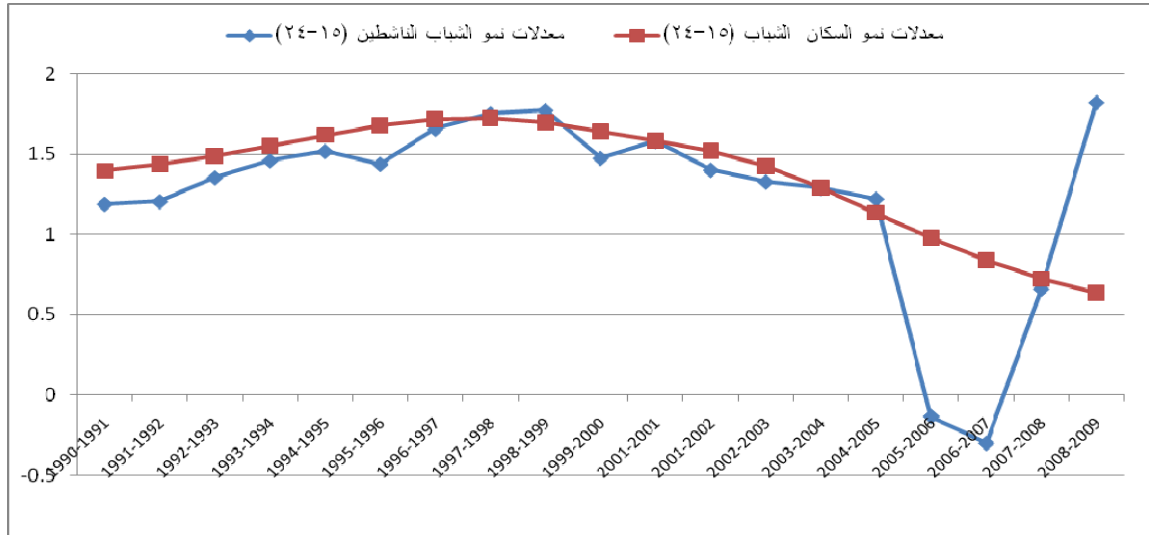
2009	2005	2000	
61.2	61.4	61.5	
55.5	56.2	56.7	
53.4	52.4	51.7)
70	71.9	73.5	(
65.9	65.6	67.1	
59	58.5	57.5	
60.6	59.9	58.1	
65.2	64.3	63.5	
46.20	45.15	44.30	
45.31	44.55	45.05	
48.53	46.66	42.46	

<http://kilm.ilo.org/KILMnetBeta/default2.asp>International Labour Organization (ILO), Key Indicators of the Labor Market : _____

-

(9) 2005-2003 1999-1997

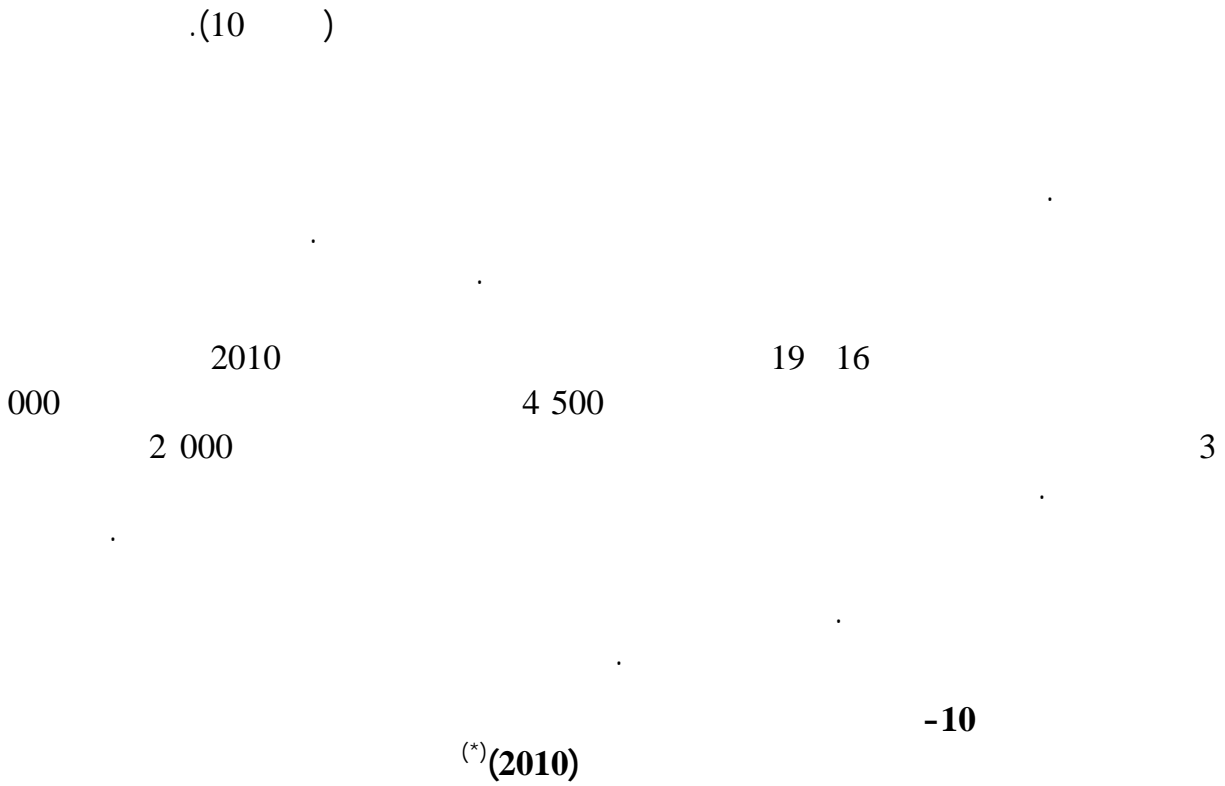
(2009-1990)

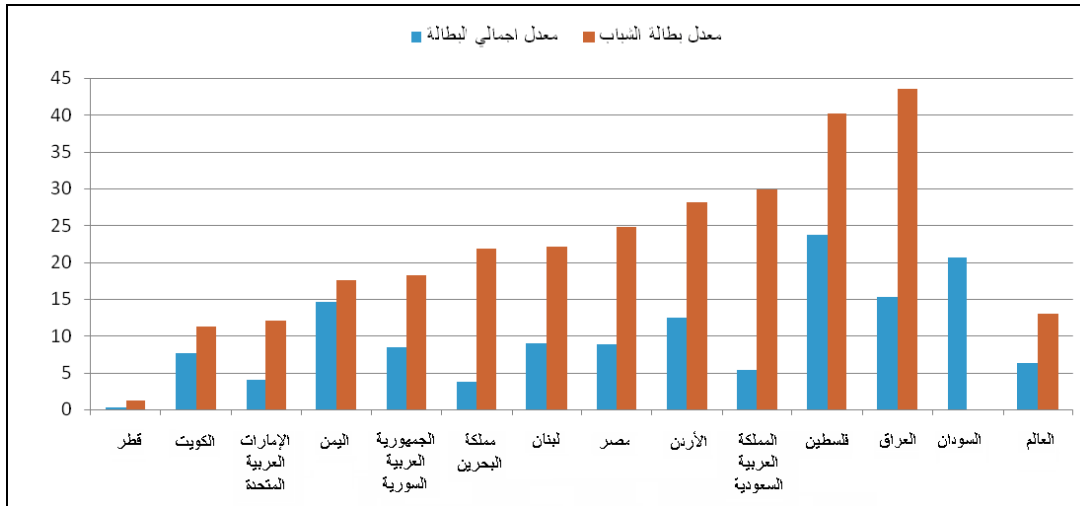


<http://kilm.ilo.org/KILMnetBeta/default2.asp> International Labour Organization (ILO), Key Indicators of the Labor Market :

(2009-2000)

0.66-	2.50	1.85	1.73-	2.13	0.40	1.67-	2.31	0.64	
2.19	1.51	3.70	0.88-	0.17	0.71-	0.35-	0.74	0.39	
1.74-	2.72	0.98	0.83-	2.57	1.74	1.11-	2.64	1.53	
0.53	2.12	2.64	0.55-	2.10	1.55	0.30-	2.11	1.80	
0.44-	2.32	1.88	1.00-	2.33	1.32	0.79-	2.32	1.53	
0.30-	2.06	1.76	1.02-	2.13	1.10	0.90-	2.09	1.19	
0.27	1.92	2.19	0.11-	1.87	1.76	0.01-	1.89	1.88	
5.35	4.13	9.48	1.09-	3.99	2.90	0.22-	4.06	3.83	
4.76	5.74	10.50	1.83	15.57	17.40	3.90	12.39	16.29	
0.56-	3.11	2.54	0.28-	3.21	2.93	0.36-	3.16	2.80	
0.11-	0.84	0.73	0.34-	1.35	1.01	0.17-	1.10	0.93	
1.67-	1.72	0.05	0.83	1.77	2.60	0.12	1.75	1.86	
1.71	2.95	4.66	0.46-	1.71	1.25	0.54-	2.30	1.76	
1.01	3.95	4.96	0.05	3.75	3.80	0.22	3.85	4.07	



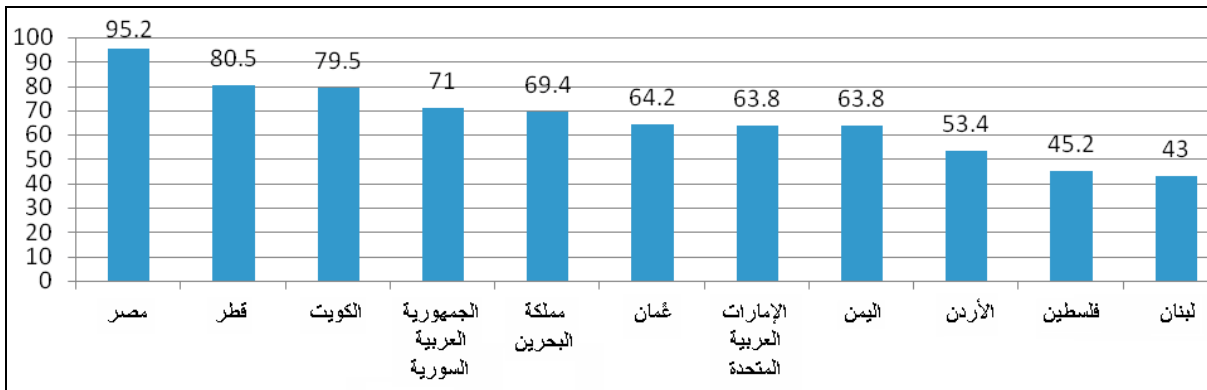


International Labour Organization, Statistical update on Arab States and Territories and North African Countries, May 2011; and Millenium Development Goals Indicators, mdgs.un.org.

(2005) (1994) (2001) (*)

(11)

-11



2009 / 31 29

(25) 50 (24-15) 2010

2009

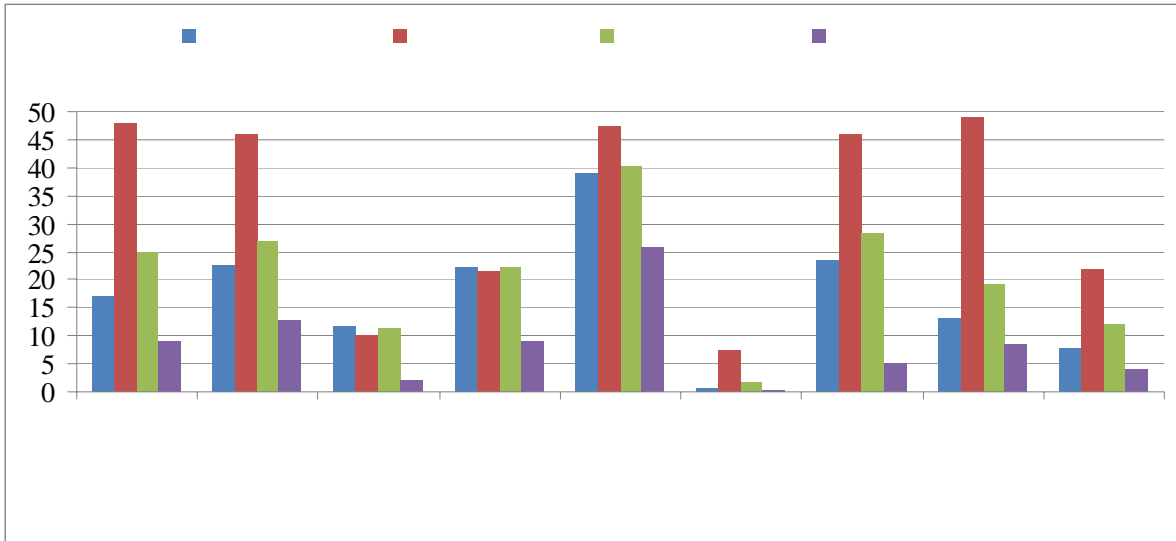
(25)

(26)

(12)

-12

(*)



<http://kilm.ilo.org/KILMnetBeta/default2.asp> International Labour Organization (ILO), Key Indicators of the Labor Market : _____

(2005)

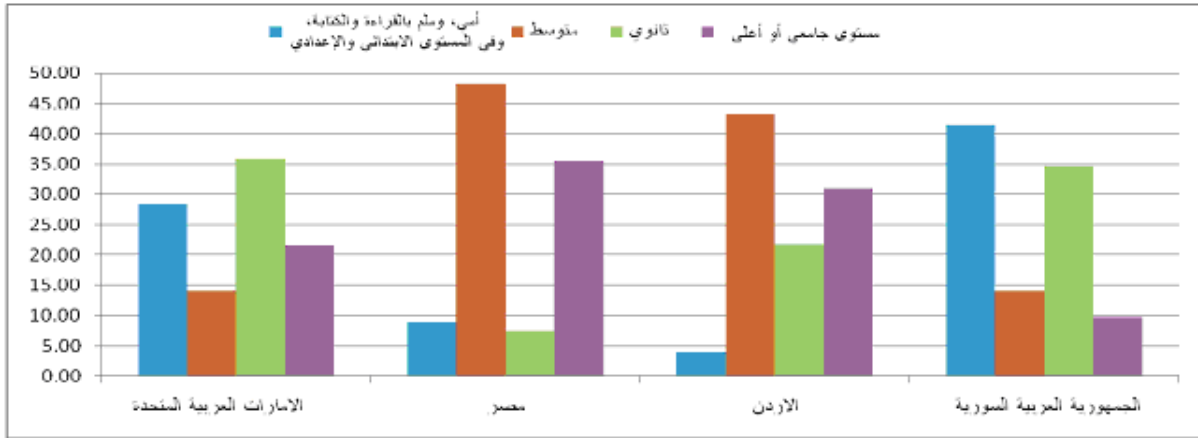
(26)

<http://www.arab-hdr.org/publications/other/ahdr/papers/2005/cherkaoui.pdf> .2005

(2007) (2005) (2009) (2007) (*)
(2008) (2007) (2008) (2007) (2008)

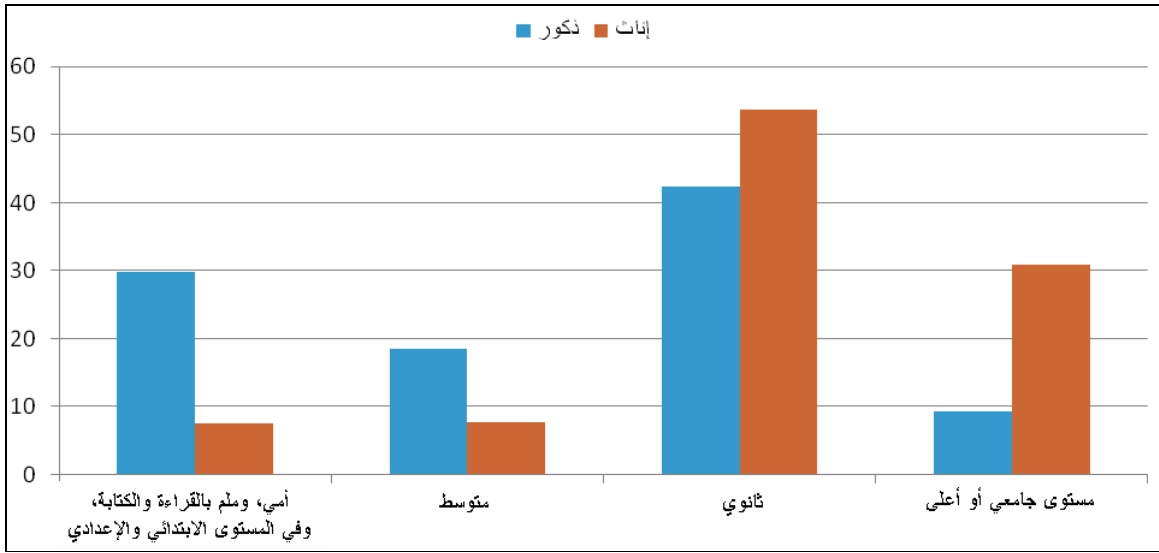
(27)

.(13)



2009) (2010) :
 .(2005) (2009) (

.(14)



(2009)

(*)	(K)	(K)	
59.3	34.1	39.9	
3.4	6.7	6.3	
12.0	14.6	14.6	
1.6	3.1	2.5	
8.2	19.3	17.7	
3.1	4.5	4.2	
1.6	2.7	2.5	
1.5	2.6	2.1	
3.5	5.7	4.4	
1.9	1.8	1.5	
2.5	2.7	1.9	
3.9	2.3	2.4	

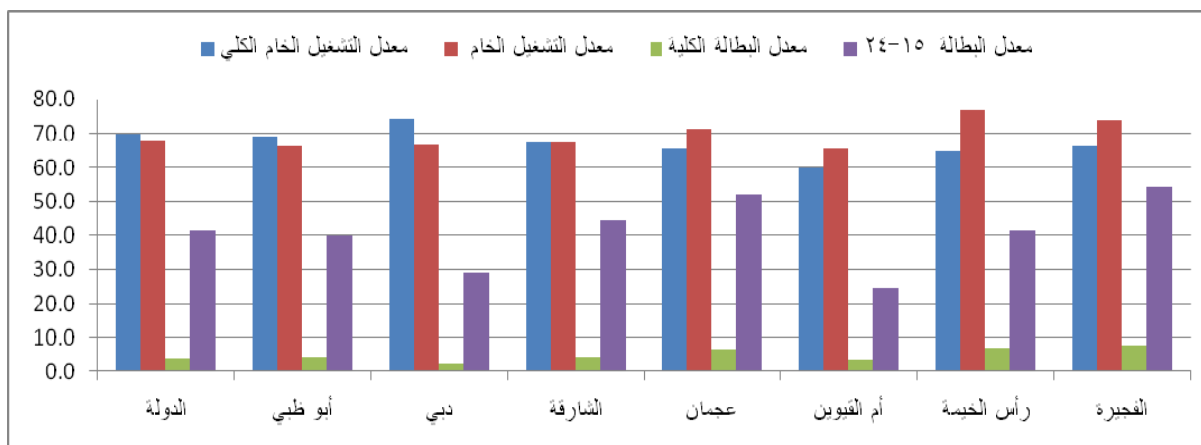
.2009

.2009

(*)

.(15)

(2008)



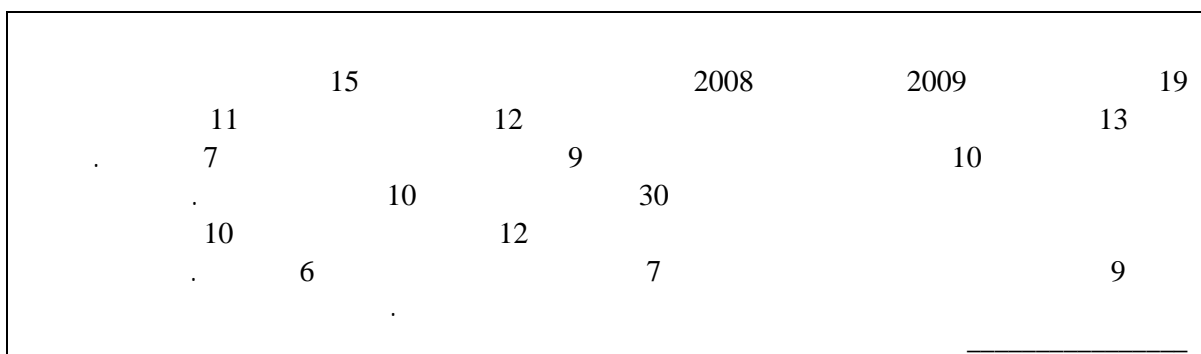
.2008

: _____

2009

(28)

(29)



(28)

.2011 / 22-15

(29)

.2011 / 22-15

:_

2014

2014 2011

-

(30) 2000

(31)

(32)

2000

(33) 2000

: 2000

.1996 A/50/728

2000

(30)

:

()

(31)

.2009

-

()

(32)

.2010

.E/ESCWA/PI/2009/12

:

()

(33)

_____ -1

1965

1965 /
1975 1965

(20-) 2037

1979

1985

151/34

2000

2000

2007

.1995

2000

(1993)

(1995)

(1995)

(1995)

(1992)

2000

.(1995)

2000

2000

2000

2000

2000

-2

2000

() :

()

()

()

2000

(34) _____ (1)

-

-

-

-

-

-

-

-

-

24-15

-

()

.2010

(34)

(35) _____ (2)

-

-

-

)

.(

-

-

_____ (3)

-

-

-

-

_____ ()

2000

_____ (35)

2000

:

_____ (1)

-

-

-

-

_____ (2)

-

-

-

(3)

-

-

-

-

-

()

2000
()

/

/

3

2000

:

_____ (1)

-

-

-

-

-

_____ (2)

-

-

-

_____ (3)

-

-

-

_____ (4)

-

-

-

-

-

.

_____ (5)

-

-

-

_____ -4

_____ -5

_____ -6

-

.A/RES/50/81 _____ 2000 _____

()

.E/ESCWA/SDD/2005/5 _____

_____ :

()

.2006 _____

.2004

-

Edward Sayre and Samia Al-Botmeh, 2010, *Youth Exclusion in the West Bank and Gaza Strip: The Impact of Social, Economic and Political Forces*, Middle East Youth Initiative Working Paper 10. Washington, D.C.

Graham E. Fuller, 2003, *The Youth Factor: the New Demographics of the Middle East and the Implications for U.S. Policy*, Policy towards the Islamic world, analysis paper 3, Saban Center for Middle East Policy at the Brookings Institution.

Hilary Silver, 1994, *Social Exclusion and Social Solidarity: Three Paradigms*, International Labour Review 133.

Hilary Silver, 2007, *Social Exclusion: Comparative Analysis of Europe and Middle East Youth*, Middle East Youth Initiative Working Paper 1, Washington, D.C., Wolfensohn Center for Development and the Dubai School of Government.

Jad Chaaban, 2008, *The Costs of Youth Exclusion in the Middle East*, Middle East Youth Initiative paper No. 7, American University of Beirut.

Jordi Estivill, 2003, *Concepts and Strategies for Combating Social Exclusion – An Overview*, The strategies and tools against social exclusion and poverty global programme (STEP), International Labour Organization, Geneva.

Nader Kabbani and Ekta Kothari, 2005, *Youth Employment in the MENA Region: A Situational Assessment*, social protection discussion paper No. 534, the World Bank, Washington, DC.

Nader Kabbani and Noura Kamel, 2007, *Youth Exclusion in Syria: Social, Economic, and Institutional Dimensions*, Middle East Youth Initiative Working Paper 4. Washington, D.C.: Wolfensohn Center for Development at the Brookings Institution and the Dubai School of Government.

Ragui Assaad and Farzaneh Roudi-Fahimi, 2007, *Youth In the Middle East and North Africa: Demographic Opportunity or Challenge?*, Population Reference Bureau, Washington D.C.

Ragui Assad, Ghada Barsoum, Emily Cupito and Daniel Egel, 2009, *Youth Exclusion in Yemen: Tackling the Twin Deficits of Human Development and Natural Resources*, Middle East Youth Initiative Working Paper 9, Washington, D.C. and Dubai.

René Lenoir, 1994, *Les exclus*, Editions du Seuil, Paris.

Tarik M. Yousef, 2004, *Employment, Development and the Social Contract in the Middle East and North Africa*, the World Bank.

United Nations, 2007, *World Youth Report 2007*, Department of Economic and Social Affairs, New York.

-

ILO, Key indicators of the Labor Market. <http://www.ilo.org/public/english/employment/strat/kilm/index.htm>.

United Nations, Millennium Development Goals Indicators. <http://mdgs.un.org/unsd/mdg/Data.aspx?cr=48>.

[./http://www.unesco.org/ar/home/resources-services/statistics](http://www.unesco.org/ar/home/resources-services/statistics)