

Dear Sir/Madam,

This document contains the output obtained according to the data provided through the online questionnaire.

The Industrial Turnover and Industrial New Orders Received questionnaire filled in corresponds to the following:

Establishment: XX

Municipality: Madrid (Madrid)

Company: XX

Reference period: February 2017

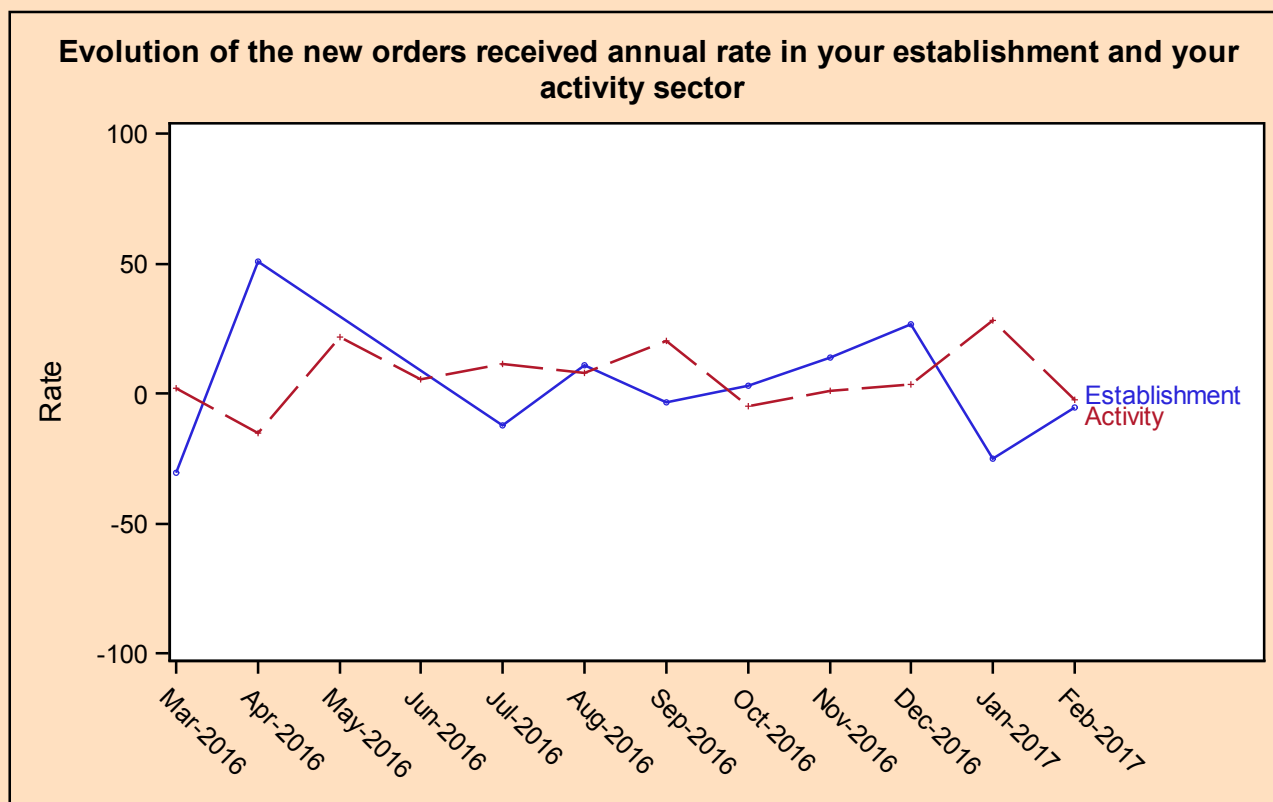
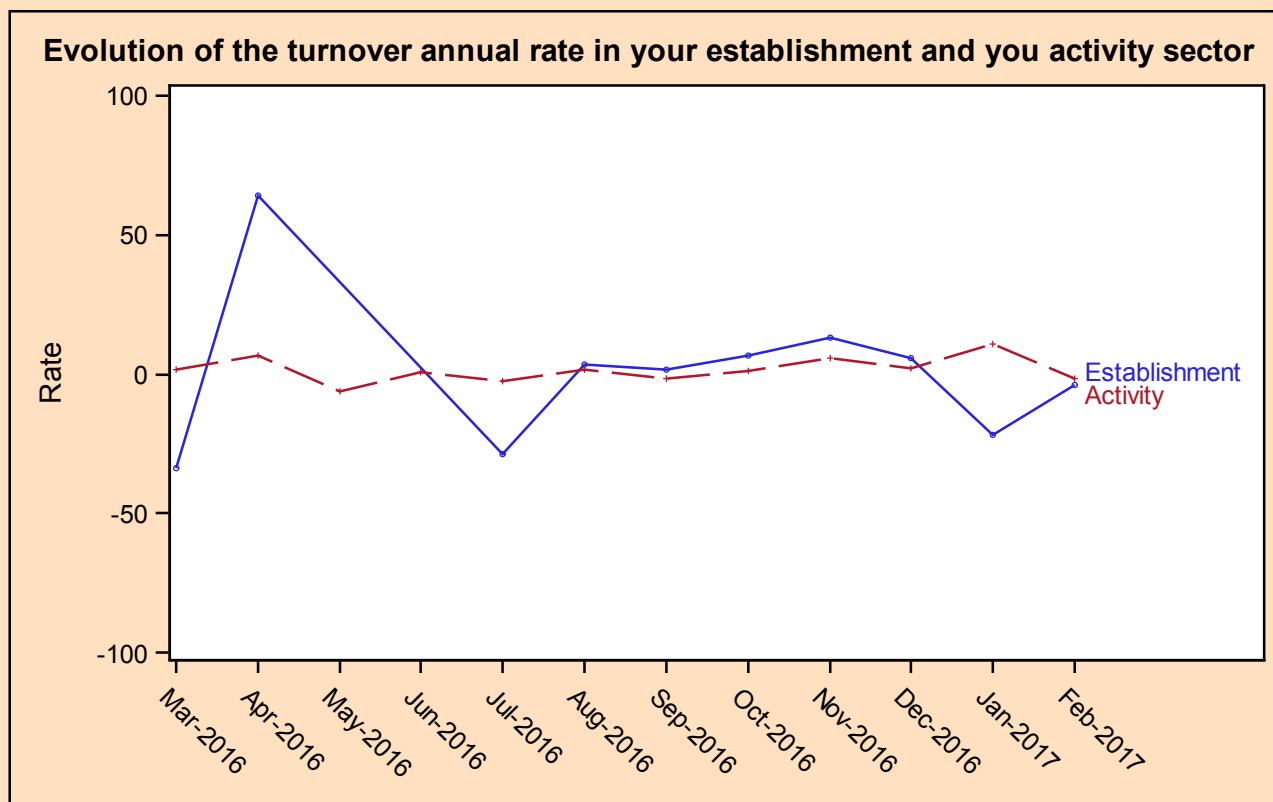
On the other hand, the graphics included shows the monthly evolution of the turnover annual rate in the mentioned establishment, together with that of your activity sector, so that you can make the comparisons to improve the development of your business.

You will also find in this report a table with the establishment data and the annual rate in percentage for the last twelve months.

This document's content is solely for information purposes and is sent to thank you for your collaboration. Thus, it is restricted to internal use. Particularly, due to the statistical nature, these data should not be used for dissemination regarding the evolution of the company or establishment variables related to those of your sector.

We hope you find this information useful. We will take into consideration any suggestion that could help us to improve these comparative reports.

INE thanks you for your collaboration



Activity sector: Naval, railway, aeronautical and spacecraft construction, and manufacture of combat vehicles.
 For more information contact us at <http://www.ine.es/contactar>.

Instituto Nacional de Estadística (Encuesta ICN-IEP)

<i>Variables studied in your company report</i>	<i>Mar_2016</i>	<i>Apr_2016</i>	<i>May_2016</i>	<i>Jun_2016</i>	<i>Jul_2016</i>	<i>Aug_2016</i>	<i>Sep_2016</i>	<i>Oct_2016</i>	<i>Nov_2016</i>	<i>Dec_2016</i>	<i>Jan_2017</i>	<i>Feb_2017</i>
Turnover	2.793.125	3.028.024	3.030.975	2.418.916	1.743.171	2.234.906	4.325.283	3.085.734	2.365.018	2.198.737	1.871.025	2.049.222
Annual variation in % over the same month in the previous year	-33,78	64,37	*	*	-28,67	3,50	1,65	6,53	13,18	5,94	-21,82	-3,82
- Domestic market	1.451.468	1.659.292	1.580.987	1.394.491	953.849	1.438.666	1.817.986	1.976.855	1.517.086	1.280.279	924.714	764.096
- Non-domestic market (EU, euro zone)	722.424	759.882	870.687	470.779	321.791	305.239	1.442.811	671.762	446.224	367.511	482.081	726.647
- Non-domestic market (EU, non-euro zone)	162.296	135.825	81.218	118.930	94.743	84.159	188.493	92.765	148.905	77.119	75.493	89.145
- Non-domestic market (Rest of the world)	456.938	473.025	498.082	434.716	372.789	406.843	875.993	344.352	252.803	473.828	388.737	469.334
New orders received in the month	2.889.279	2.928.287	4.539.884	2.353.443	1.836.334	2.376.529	3.956.101	3.008.100	2.256.298	2.464.986	1.936.212	2.048.471
Annual variation in % over the same month in the previous year	-30,49	50,84	*	*	-12,36	11,10	-3,30	3,12	13,64	26,49	-24,87	-5,30
- Domestic market	1.477.349	1.645.458	1.560.252	1.355.792	1.020.781	1.715.695	1.804.775	2.010.383	1.511.065	1.217.657	945.925	760.437
- Non-domestic market (EU, euro zone)	747.705	707.525	926.753	450.441	285.011	219.650	1.310.211	541.795	336.125	346.335	505.515	750.561
- Non-domestic market (EU, non-euro zone)	171.783	133.564	74.687	109.004	78.353	112.852	203.222	101.433	187.060	75.368	86.918	67.812
- Non-domestic market (Rest of the world)	492.442	441.740	1.978.192	438.206	452.189	328.332	637.895	354.489	222.048	825.626	397.854	469.661